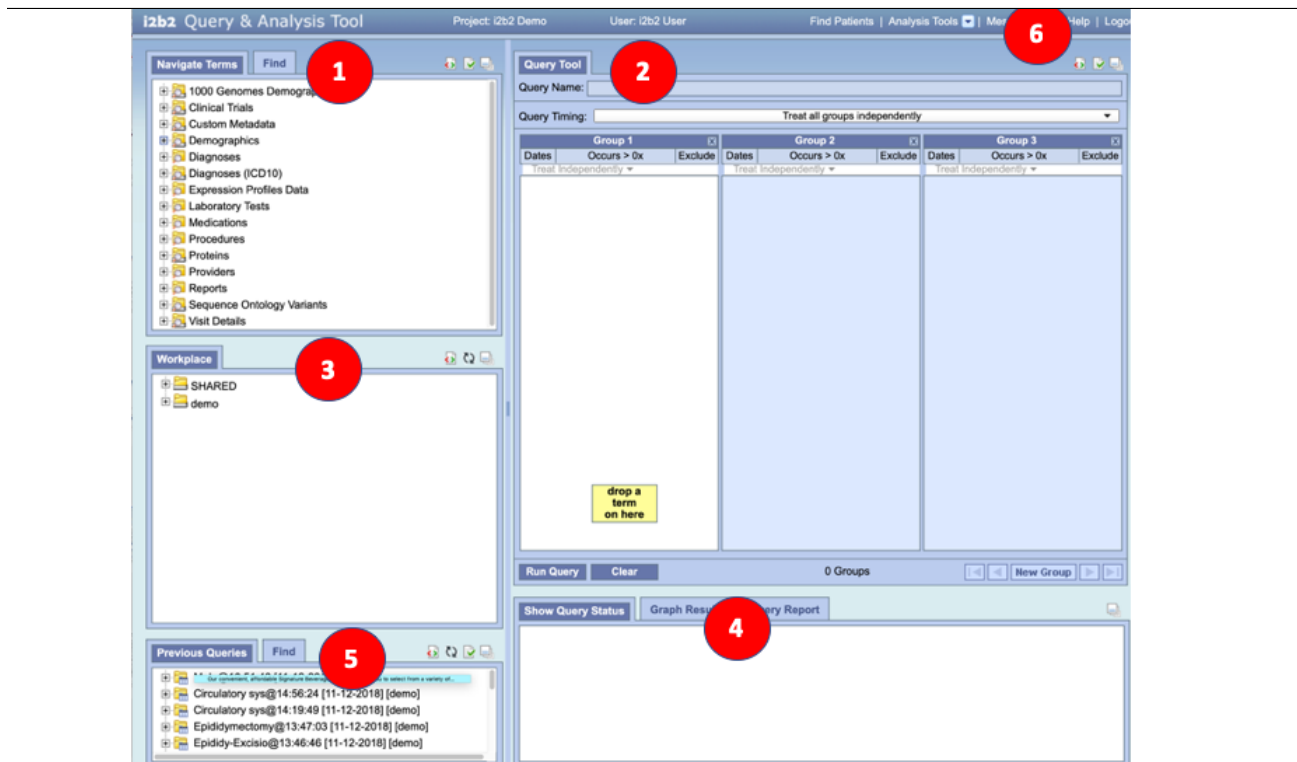


Quick Guide to Creating and Running Queries

- Creating the Query
 - Select a Folder or Item from section #1, 3 or 5
 - Next, select the RUN QUERY button at the bottom of the Query Panel -.
 - As the Query finishes, a new Folder is created in the Previous Queries Panel
- Results appear in Show Query Status Panel
 - The full results of the query are placed in a Query Report.
- The Query Report for contains the full results of the query:

Quick Overview for Creating and Running a Query

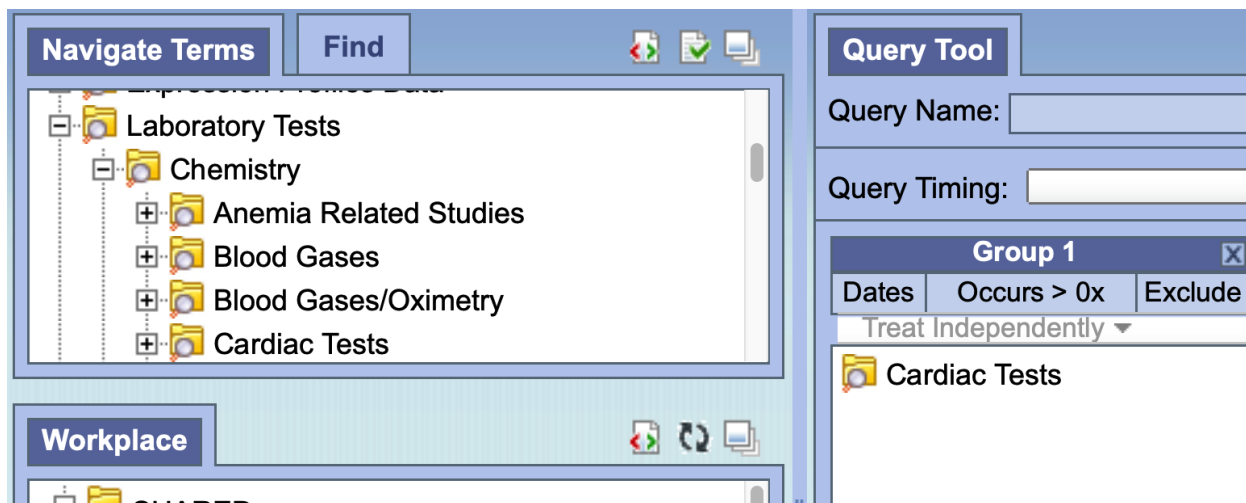


This section describes the process of creating and running a query and reviewing the output.

Creating the Query

To create a query, it is necessary to define what information will be retrieved from the databases. Items can be selected from other i2b2 Web Client views and dragged and dropped (copied) into the **Query Tool Group panels on the right**.

Select a Folder or Item from section #1, 3 or 5

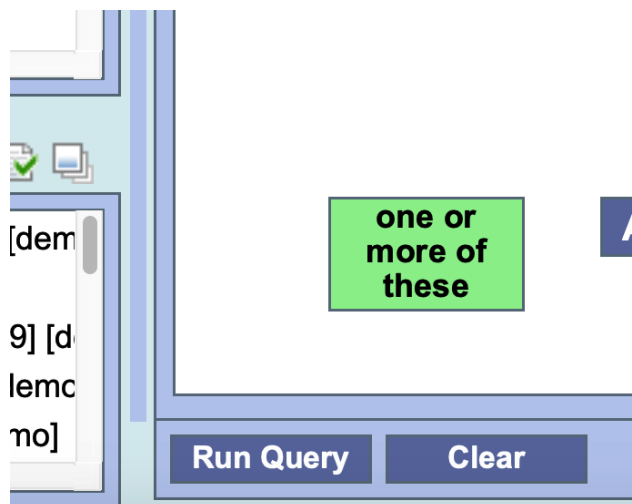


For example, From Navigate Terms Panel (#1) select Laboratory Tests and then Chemistry

Grab "Cardiac Tests" and drag over

And drop it in to panel #2 "Group 1".

Next, select the RUN QUERY button at the bottom of the Query Panel -.



Next, i2b2 will ask for the desired **Output Selection** -->

When a query is run, it needs the desired type of results that the server will return. There are several result types available, each of which will yield a different output.

Patient set: Provides a list of patients who met the search criteria.

Encounter set: Provides the total number of encounters that met the search criteria

Number of patients: Provides the total number of patients who met the search criteria

Run Query

Please type a name for the query:

Please check the query result type(s):

- ☒ Patient set
- ☐ Encounter set
- ☒ Number of patients
- ☐ Gender patient breakdown
- ☒ Vital Status patient breakdown

OK **Cancel**

Gender patient breakdown:

Provides a breakdown of the patients by their gender.

Vital Status patient breakdown: Provides a breakdown of the patients by their vital status.

Race patient breakdown: Provides a breakdown of the patients by their race

Age patient breakdown: Provides a breakdown of the patients by their age.

Timeline: Not used in the Web Client. If selected it will work the same as patient set

Previous Queries **Find**

Cardiac Tests@15:40:46 [2-15-2019] [demo]

Results of Cardiac Tests@15:40:46 [2-15-2019] [demo]

Patient Set for "Cardiac Tests@15:40:46 [2-15-2019] [demo]"

Number of patients for "Cardiac Tests@15:40:46 [2-15-2019] [demo]"

Vital Status patient breakdown for "Cardiac Tests@15:40:46 [2-15-2019] [demo]"

As the Query finishes, a new Folder is created in the Previous Queries Panel

Show Query Status

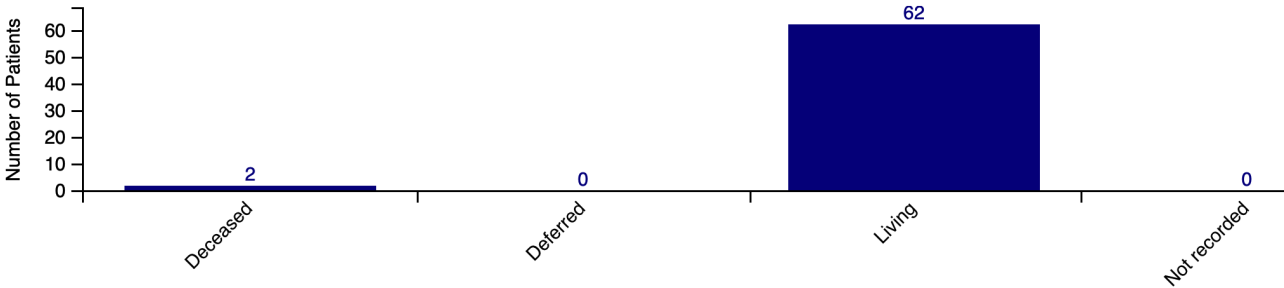
Graph Results

Query Report

Number of patients

64

For Query Cardiac Tests@15:40:46"



Results appear in Show Query Status Panel

When completed, in the Show Query Status panel, graphical results will be displayed automatically. The panel can be expanded by clicking the Expand Panel button will expand the results.



i2b2 Query Report

[Print Report](#)

The query entitled "Cardiac Tests@15:40:46" submitted on 2019-02-15 23:40:49, was successfully completed on 2019-02-15 23:40:50. This query was performed by "i2b2 User". The search was completed in 1 seconds.

Query Definition

Temporal Constraint: Treat All Groups Independently

All Groups



Cardiac Tests

Labtests \ Chemistry \ Cardiac Tests

Independent of Visit

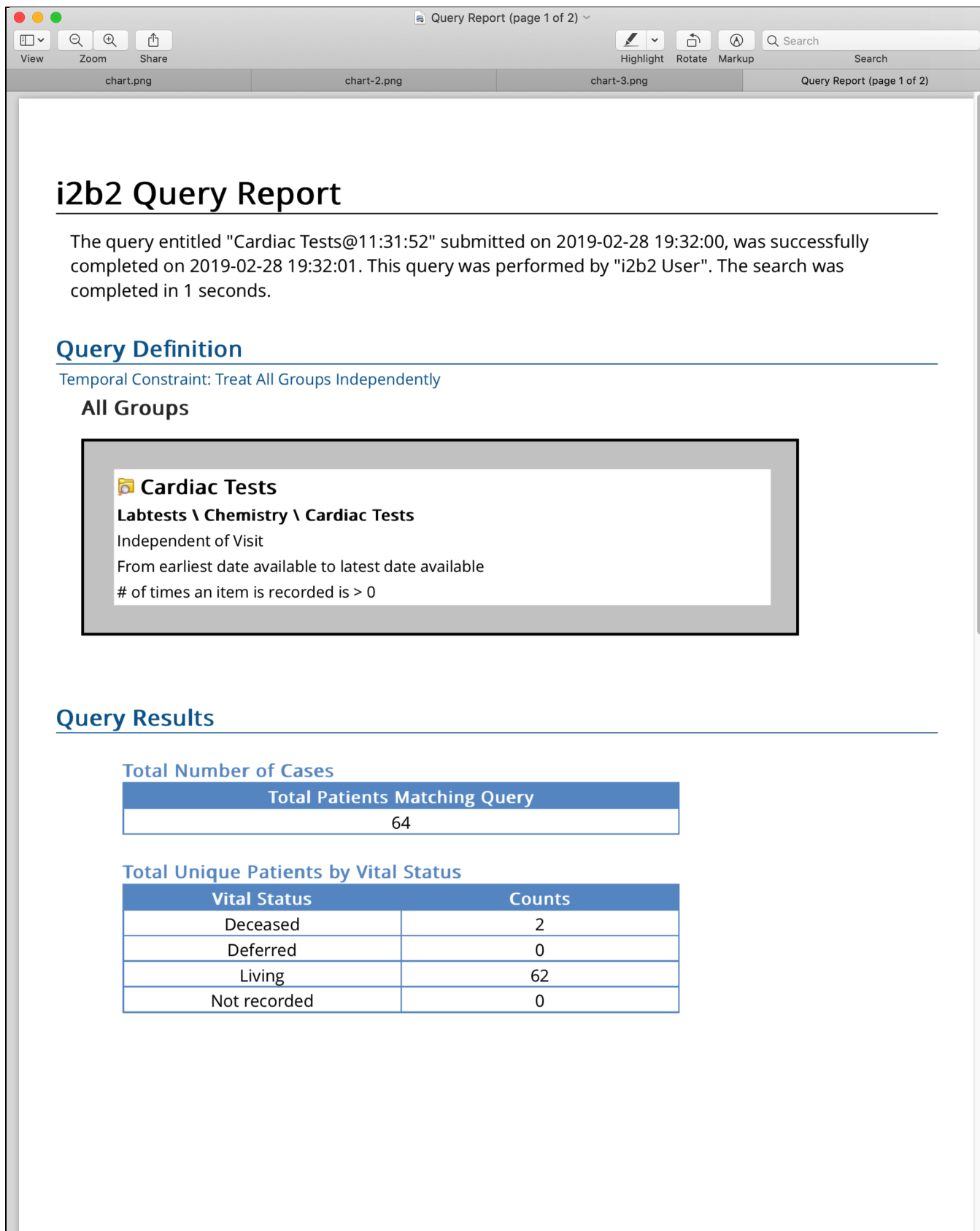
From earliest date available to latest date available

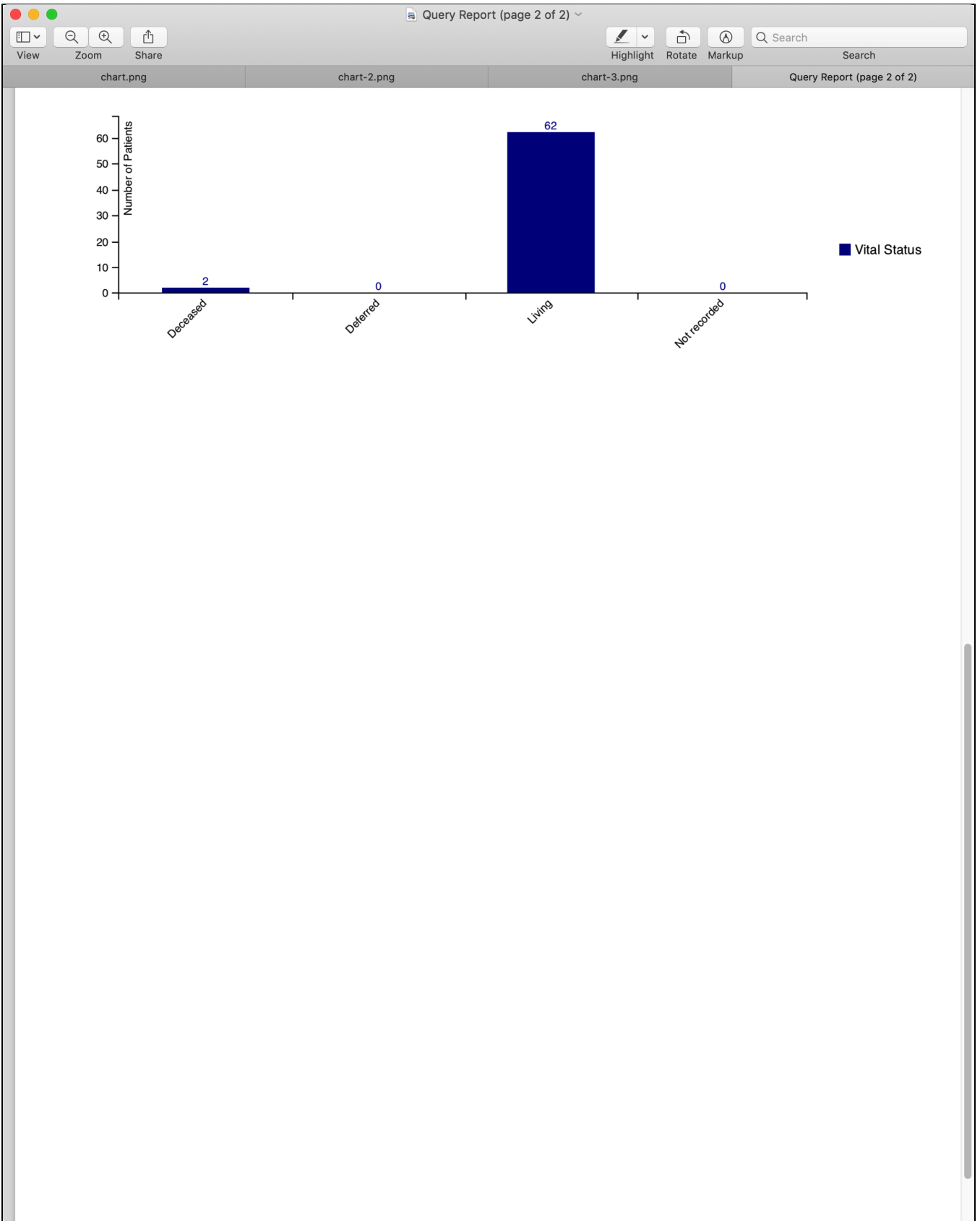
of times an item is recorded is > 0

The full results of the query are placed in a Query Report.

Pressing the Query Report button brings up this report

The Query Report for contains the full results of the query:





Above on this Page

- [Quick Overview for Creating and Running a Query](#)
 - [Creating the Query](#)
 - [Results appear in Show Query Status Panel](#)
 - [The Query Report for contains the full results of the query:](#)

Web Client Help Topics - Top Level

[Back to i2b2 Web Client Help - TOP](#)