

Project Setup

A hive can have multiple projects setup. More technical detail can be found in [6.6 Managing i2b2 Projects](#)

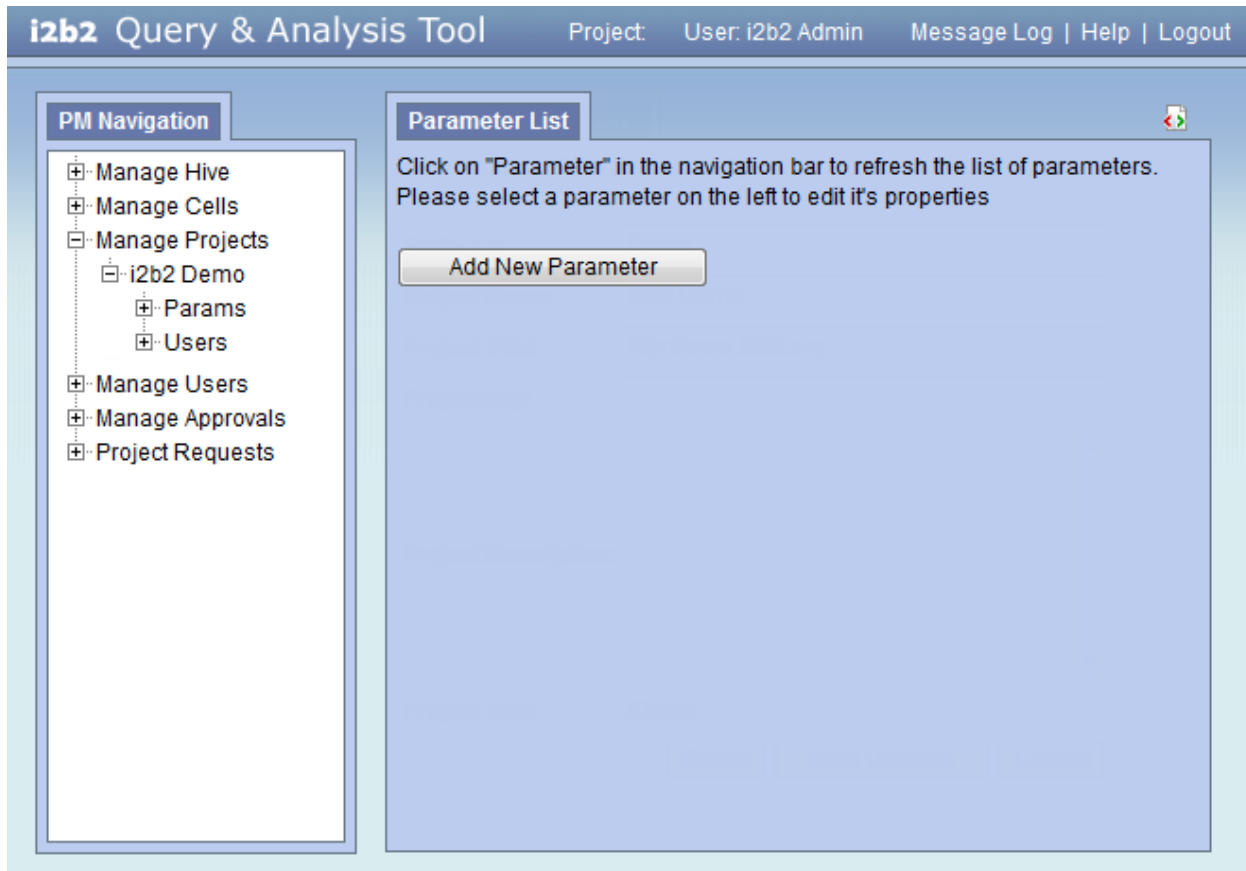
Project Data

- The **project data page** captures general information about the project.
- The information will be stored in the **PM_PROJECT_DATA** table.

The screenshot shows the 'i2b2 Query & Analysis Tool' interface. At the top, a navigation bar includes 'Project:', 'User: i2b2 Admin', and links for 'Message Log | Help | Logout'. On the left, a 'PM Navigation' sidebar lists options: 'Manage Hive', 'Manage Cells', 'Manage Projects' (expanded to show 'i2b2 Demo' with sub-items 'Params' and 'Users'), 'Manage Users', 'Manage Approvals', and 'Project Requests'. The main content area is titled 'Project > "undefined"' and contains the instruction 'Please select which project configuration screen you want to access.' Below this are several form fields: 'Project Id:' (value: Demo), 'Project Name:' (value: i2b2 Demo), 'Project Wiki:' (value: http://www.i2b2.org), 'Project Key:' (empty), 'Project Description:' (a large empty text area), and 'Project Path:' (value: /Demo). At the bottom right of the form are three buttons: 'Delete', 'Save Updates', and 'Cancel'.

Project Parameters

- Parameters entered here are *specific to the project*.
- The project parameters can be added from the **project parameters page**.
- The information will be stored in the **PM_PROJECT_PARAMS** table.



Project Database Lookup

- Each i2b2 cell has a DB_LOOKUP table that defines the Wildfly XML datasource name for each project.
- Expand Manage Cells in the Navigation Tree on the left of the page. Then select the cell to expand further, once this is done you will see DB-Lookup as an option. Clicking on DB-Lookup will display the DBLookup List page. This page will display all the values in a table format.
- To add a new entry into the DB_LOOKUP table simply click on the **Add New DBLookup** button that appears above the table of existing values. The page will be updated to a form with fields to capture the information to be stored in the DB_LOOKUP table.
- To edit an existing entry, click on its Name located in the Navigation Tree on the left. The page will be updated to show the values currently filed in the DB_LOOKUP table. Make any changes and click on **Save** to save your edits.

i2b2 Query & Analysis Tool

Project: User: i2b2 Admin

Install Plugins from i2b2 Gallery | Message Log | Help | Change Password | Logout

PM Navigation

Manage Hive

Manage Cells

Data Repository

Params

DB-Lookup

Demo

Demo SQL

Dev

Dev SQL

Prod

File Repository

Ontology Cell

Workplace Cell

IM Cell

Manage Projects

Manage Users

Manage Approvals

Project Requests

DBLookup List

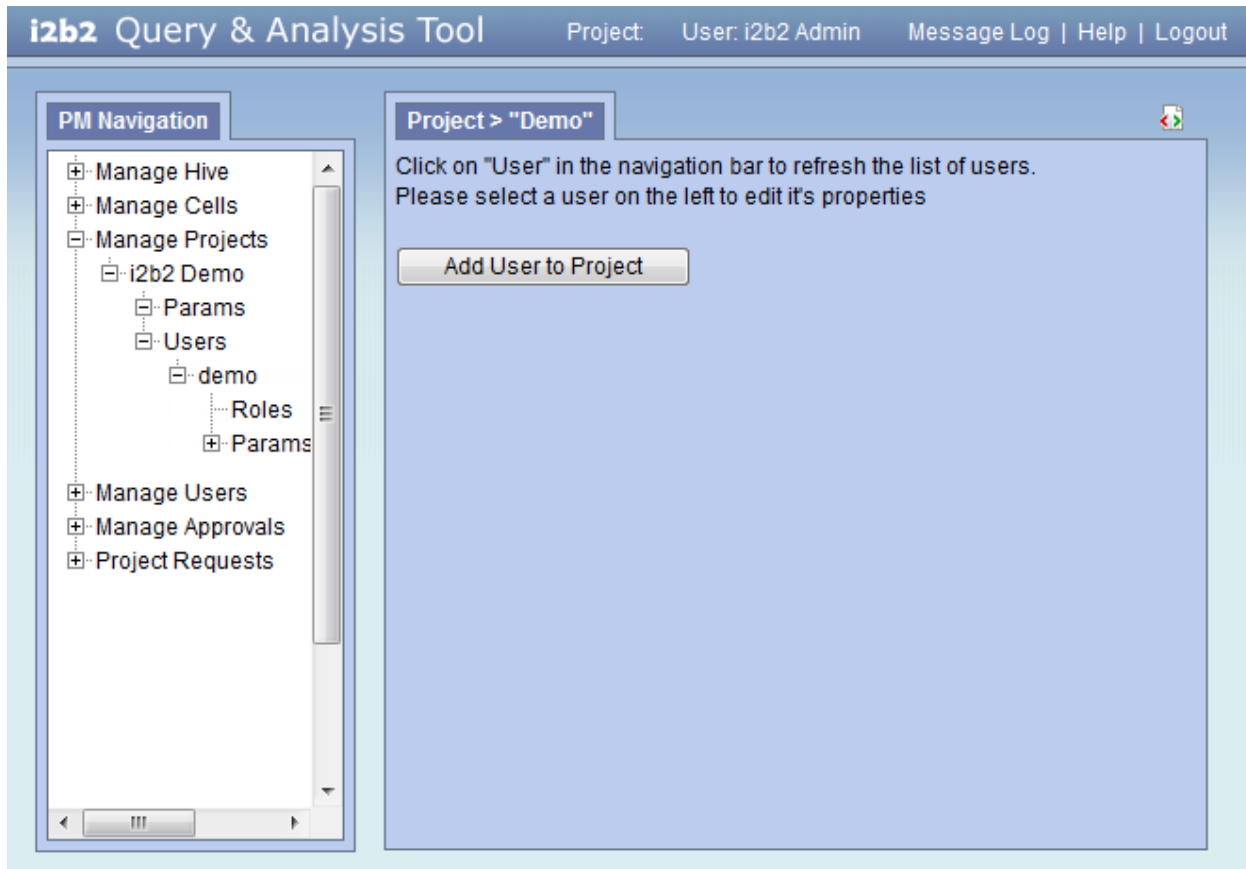
Click on "DBLookup" in the navigation bar to refresh the list of DB Lookup.
Please select a DB Lookup on the left to edit it's properties

Add New DBLookup

Name	DB Schema	JNDI Data Source	DB Server	Owner ID	Project Path
Demo	i2b2demodata	java:/QueryToolDemoDS	ORACLE	@	/Demo/
Demo SQL	i2b2demodata.dbo	java:/QueryToolDemoSqlDS	SQLSERVER	@	/DemoSQL/
Dev	i2b2dev	java:/QueryToolDevDS	ORACLE	@	/Dev/
Dev SQL	i2b2dev.dbo	java:/QueryToolDevSqlDS	SQLSERVER	@	/DevSQL/
Prod	i2b2production	java:/QueryToolProdDS	ORACLE	@	/Prod/

Project Users

- The **project users' page** captures information regarding which users have access to the project and their role. *(see next section for detailed information regarding roles)*
- The information will be stored in the **PM_PROJECT_USER_ROLES** table.



Project User Roles

Each user will have at least two roles per *user_id* and *product_id* combination. These two roles can be further defined as a **Data Protection role** and a **Hive Management role**.

The data protection role establishes the detail of data the user can see while the hive management role defines the level of functionality the user has in a project. The following tables summarize the roles in a hierarchical order of least to most access.

Data Protection Track	
Role	Access Description
DATA_OBFSC	<p>OBFSC = Obfuscated</p> <ul style="list-style-type: none"> The user can see aggregated results that are obfuscated (example: patient count). The user is limited on the number of times they can run the same query within a specified time period. If the user exceeds the maximum number of times then their account will be locked and only the Admin user can unlock it.
DATA_AGG	<p>AGG = Aggregated</p> <ul style="list-style-type: none"> The user can see aggregated results like the patient count. The results are <u>not</u> obfuscated and the user is <u>not</u> limited to the number of times they can run the same query.
DATA_LDS	<p>LDS = Limited Data Set</p> <ul style="list-style-type: none"> The user can see all fields except for those that are encrypted. An example of an encrypted field is the <i>blob fields</i> in the <i>fact</i> and <i>dimension tables</i>.

DATA_DEID	DEID = De-identified Data <ul style="list-style-type: none"> The user can see all fields including those that are encrypted. An example of an encrypted field is the <i>blob fields</i> in the <i>fact</i> and <i>dimension tables</i>.
DATA_PROT	PROT = Protected <ul style="list-style-type: none"> The user can see all data, including the identified data that resides in the Identity Management Cell.

Hive Management Track	
Role	Access Description
USER	Can create queries and access them if he / she is the owner of the query.
MANAGER	Can create queries as well as access queries created by different users within the project

- Additional roles can be added to the **PM_PROJECT_USER_ROLES** table but there will not be any recognized hierarchy to those roles.*

Project User Parameters

- Parameters entered here are *specific to the user and the project*.
- The project's user parameters can be added from the **project users' page**. Once you click on a project an additional section for entering the user parameters will appear at the bottom of the page.
- The information will be stored in the **PM_PROJECT_USER_PARAMS** table.

PM Navigation

- [-] Manage Hive
- [-] Manage Cells
- [-] Manage Projects
 - [-] i2b2 Demo
 - [-] Params
 - [-] Users
 - [-] demo
 - [-] Roles
 - [-] Params
- [-] Manage Users
- [-] Manage Approvals
- [-] Project Requests

Parameter List

Click on "Parameter" in the navigation bar to refresh the list of parameters.
Please select a parameter on the left to edit it's properties

Add New Parameter