

# 342. Import CSV

## What is CSV?

*A comma-separated values (CSV) file stores tabular data (numbers and text) in plain text. Plain text means that the file is interpreted a sequence of characters, so that it is human-readable with a standard text editor. Each line of the file is a data record. Each record consists of one or more fields, separated by commas. The use of the comma as a field separator is the source of the name for this file format.*

See [http://en.wikipedia.org/wiki/Comma-separated\\_values](http://en.wikipedia.org/wiki/Comma-separated_values)



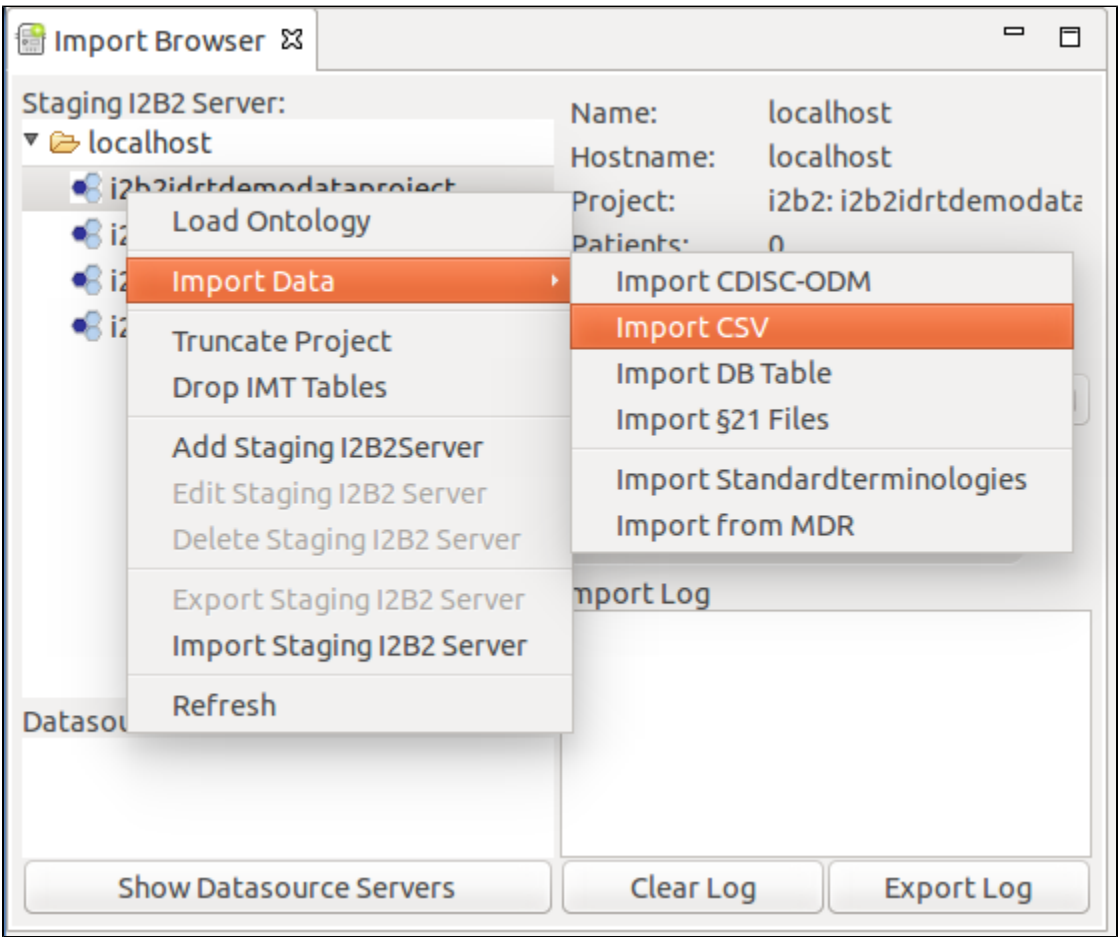
You can use tabulator ('\\t'), semicolon (';') or comma (',') as a delimiter.

## Example Files

In the github repository, you can find some [CSV Example Files](#).

## Import CSV

To start the CSV Import, right click the project in the [Import Browser](#) you want to upload data to and select Import Data -> Import CSV.



A new window opens, where you can set different options.

## CSV Import Settings

CSV Import Settings

Truncate i2b2 Project? ☐

Truncate Previous Queries? ☐

Database Indexing ☐ Ignore ☐ Stop/Start ☒ Drop/Create

Set patient\_count after import ☒

CSV Folder  ...

Use PID-Generator ☐

☒ IDAT+Items in CSV-File ☐ IDAT in external ID-File

ID-File  ...

Date Pattern  ▼

Quote Character

Save Settings? ☐

< Back

Next >

Cancel

Finish

Name	Description
Truncate i2b2 Project?	If you check this, the project will be truncated before the data is uploaded.
Truncate Previous Queries?	This will truncate the previous queries tables.
Database Indexing	<b>Ignore:</b> Don't touch the indexes; <b>Stop/Start:</b> Stop the indexes before the upload and start them afterwards; <b>Drop/Create:</b> Drop the indexes before the upload and create them from scratch afterwards.
Set patient_count after import	This will fill the c_totalnum column.
CSV Folder	Here you can select the folder that contains all CSV files you want to upload.
Use PID Generator	This will use the PID Generator, which has to be configured separately (see <a href="#">Options</a> ).
IDAT Options	Select whether your identifying data is in the same or in an extra file.
ID-File	Select the identifying data file here.
Date Pattern	Here you can select the date pattern that your data uses (e.g. dd-MM-yyyy).
Quote Character	Here you can set the quote character that you use in your CSV files.
Save Settings?	This will save the settings for the next import. <b>Note:</b> The truncate checks are never saved.

Set your variables and continue to page 3.

### CSV Import Settings

CSV Import Settings

- ☒ IDRT-CSV\_MedicalData\_Visit\_2.csv
- ☒ IDRT-CSV\_MedicalData\_Visit\_1.csv
- ☒ IDRT-CSV-Biomaterial.csv
- ☒ IDRT-CSV\_MedicalData\_Baseline.csv
- ☒ IDRT-CSV\_MedicalData\_Visit\_3.csv

Item	Name	Tooltip	Datatype	Metadata
PID			Integer	PatientID
Birthdate			Date	
Age			Integer	
Medication			String	
BP SYS			Integer	
BP DIA			Integer	
BP Category			String	
LV Mass			Float	
RV Mass			Float	
Smoking Hab			String	
Height			Float	
Weight			Float	
BMI			Float	
Casenumbe			Integer	EncounterID
Visit			String	
DownloadDat			Date	DownloadDate
StartDate			Date	StartDate

Guess All Schemata
Headline:  
Clear Table
Guess Schema

< Back
Next >
Cancel
Finish

On the left hand side you can see all CSV files in the selected directory. A green check mark lets you know, that a config file has been found. If there is currently no config file present, a red X is shown. On the right hand side the configuration for the selected CSV file is shown. The table consists of five columns:

**Item:** The column name in the CSV file.

**Name:** The name, the item should have in i2b2. You can e.g. rename cryptic column names.

**Tooltip:** The tooltip the item should have in i2b2. You can set a tooltip for better understanding, or the unit of an item for example.

**Datatype:** The datatype the item has. You can select either Integer, Float, Date, or String.

**Metadata:** This tells the Import Browser, where to look for specific items, such as the id of the patient, the import date, start date and so on. You can also ignore items. These will not end up in the i2b2 database.



The metadata item **PatientID/ObjectID** has to be present in each configuration file. Without it, the Import Browser won't let you continue and displays an error.



The **ObjectID** is the same as the **PatientID**, but the file is imported using modifiers instead. This way more than one row per patient is allowed. The Import Browser will tell you, if you used the Guess Schema functionality whether you should use the **ObjectID** instead.

The next table describes the buttons in the CSV Import Settings page.

Name of the Button	Description
Headline	If your CSV file does not start directly at the beginning, you can set the starting row here.
Clear Table	This will delete your configuration for the selected file.
Guess Schema	You can let the Import Browser try to guess the schema of the file. You can set in the <a href="#">Options</a> how many rows the Import Browser should look through. <b>This will override your config!</b>
Guess All Schemata	This will guess the schema for all files in the directory. <b>This will override all your configs!</b>

If you hit **Finish** the upload starts. You can observe the progress in the progress bar of the [Import Browser](#).