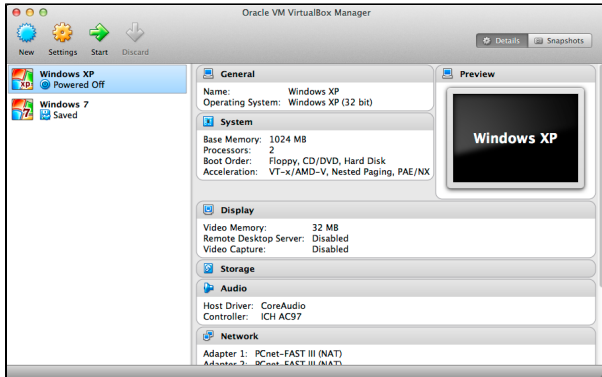


## 230. Virtual machine setup

In order to use the i2b2 Wizard, you need either a physical computer or a virtual machine, running Ubuntu Linux 14.04 (or any other supported Linux). A virtual machine has many advantages compared to a physical computer, such as storing the current machine state and reverting to it.

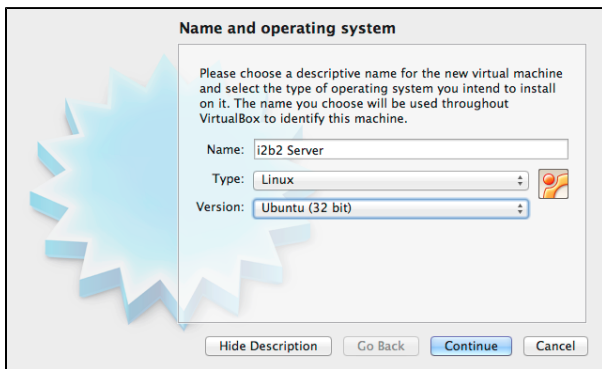
In this guide, we use VirtualBox because it is free and works on a variety of operating systems. For other VM software, e.g. VMware, the configuration is very similar.

1. Launch VirtualBox and choose **"New"** (upper left corner):



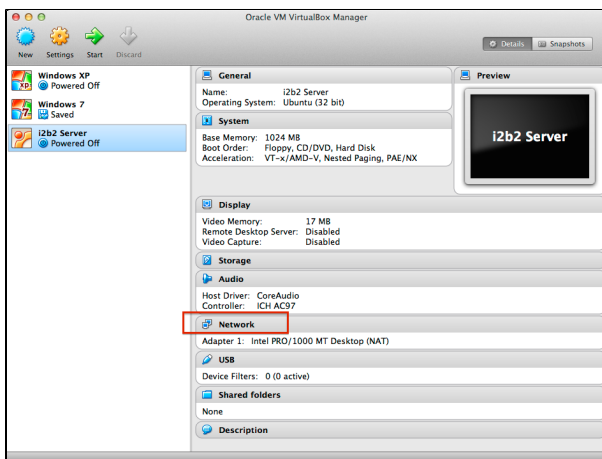
(In the screenshot above there are already some virtual machines.)

2. Choose a name for your i2b2 instance, for example **"i2b2 Server"**. Below, choose **"Linux"** and **"Ubuntu (32 bit)"**. Press **"Next"**.

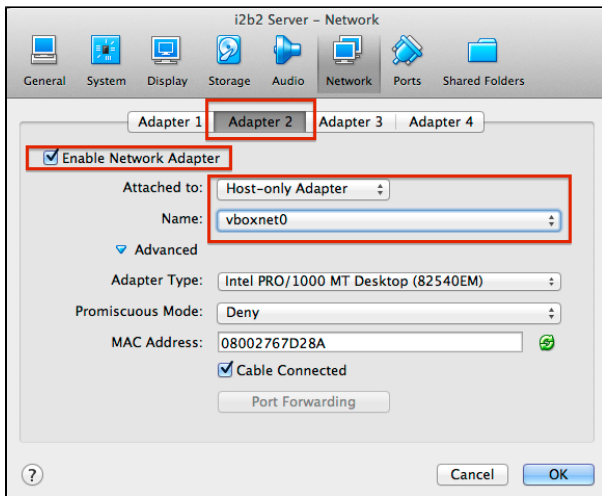


3. On the next screen, choose 1024 MB of memory. Press **"Next"**. Choose **"Create virtual hard drive now"**, **"Next"**. In the new window press **"Create"**, choose **"VDI (VirtualBox Disk Image)"**, **"Continue"**, **"Dynamically allocated"**, **"Continue"**. Choose 16 GB (8 GB is not enough), **"Create"**. The new virtual machine will be listed in the VirtualBox main window.

4. On the right side of the window in the **"Details"** tab you will find the entry **"Network"** with one entry: **"Adapter 1: Intel PRO/1000 MT Desktop (NAT)"**.

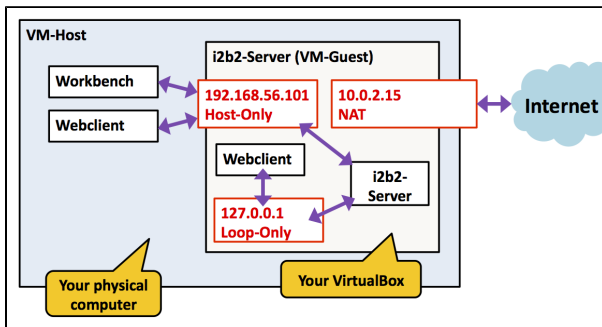


5. Click on the **"Network"** entry. In the new window select the tab **"Adapter 2"**, check **"Enable Network Adapter"** and select **"Attached to: Host-only Adapter"**. Press **"OK"**.



The main window should now list "**Adapter 1**" and "**Adapter 2**" just below "**Network**".

The figure below explains why this second networking interface is necessary. The NAT interface is used only for accessing the internet. The host-only interface, in contrast, is used to allow access to your VM from your host computer (where the i2b2 Workbench is running).



6. Now add the Ubuntu ISO-file. Select the blue "**Storage**" entry in the VirtualBox main window. On the left side of the new window in the "**Storage Tree**" select the CD-icon labeled "**Empty**". On the right side, click on the blue CD icon and select "**Choose a virtual CD/DVD disk file**". Select the **ubuntu-14.04-desktop-i386.iso** which you have previously downloaded. The entry "**IDE Secondary Master (CD/DVD): ubuntu-14.04-desktop-i386.iso**" should now be listed in the VirtualBox main window under "**Storage**".