

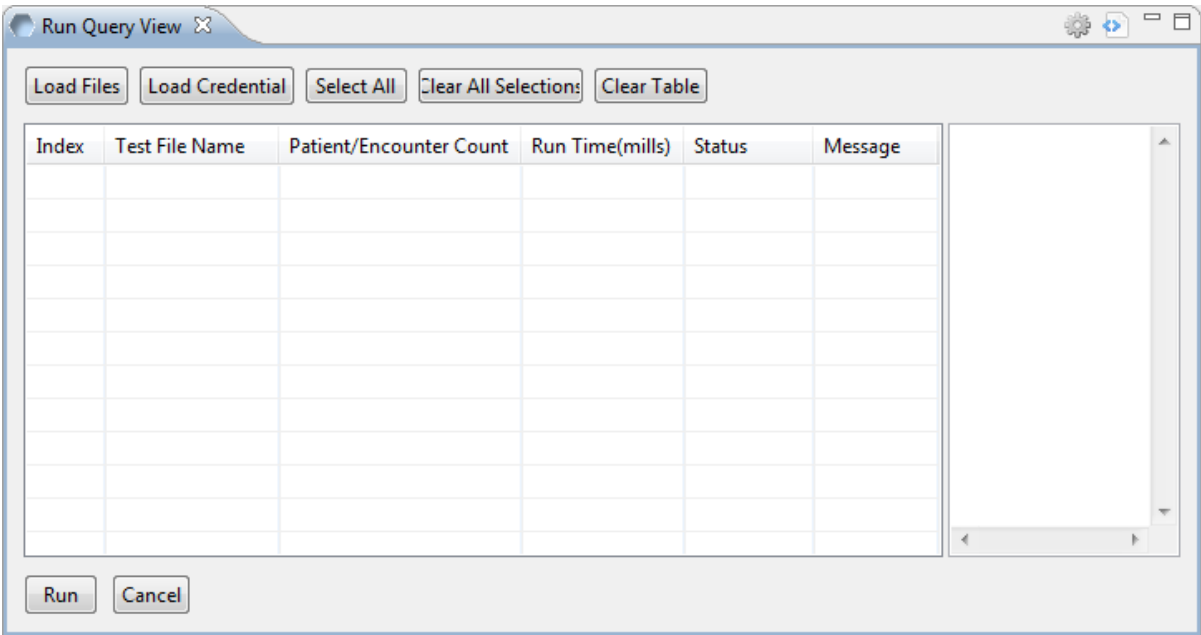
# CRC Tester Plug-in

## Overview

The CRC Tester is an optional plug-in for the i2b2 Workbench and is designed to test the CRC web services. A set of sample test cases have been provided that will work with the i2b2 demo data.

Some of the key features are:

- Sample test cases that work with the i2b2 Demo data have been provided with the source code.
- Users can easily create their own test cases that will work with their data.
- An i2b2 Workbench view has been created to provide users the ability to easily see the test cases running, their status and any errors.



## CRC Tester Plug-in

### Contents

### Quick Downloads

File Name	File Size	Description	Release Date	Version
<a href="#">i2b2crctesterplugin-src-1000.zip</a>	31 MB	Source ?Package: CRC Test Plug-in <b>Source Code + Test Cases</b>	December 7, 2012	1.0.00
<a href="#">i2b2crctesterplugin-jar-mac-1000.zip</a>	627 KB	Macintosh: CRC Test Plug-in <b>JAR file + Test Cases</b>	December 7, 2012	1.0.00
<a href="#">i2b2crctesterplugin-jar-win-1000.zip</a>	627 KB	Windows: CRC Test Plug-in <b>JAR file + Test Cases</b>	December 7, 2012	1.0.00

### Contact Information

**Mike Mendis**

Project Manager

Partners HealthCare

E-mail: [mmendis@partners.org](mailto:mmendis@partners.org)

**Shawn Murphy, MD, PhD**

Medical Director, Research Computing

Partners Healthcare

E-mail: [snmurphy@partners.org](mailto:snmurphy@partners.org)

**Search space**