

# Import Project

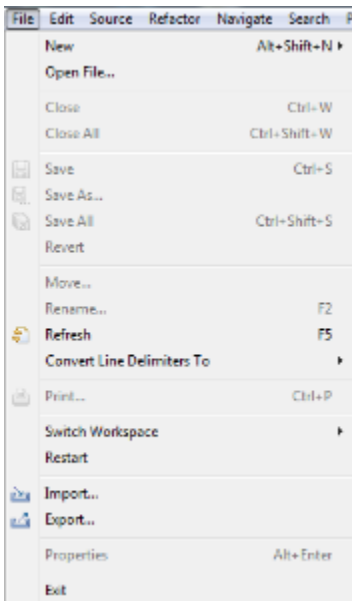
## Prerequisite

The project / directory **edu.harvard.i2b2.eclipse** is considered the *base plug-in* for the i2b2 Workbench and contains the property and configuration files. Therefore in order to use the i2b2 CRC Test plug-in you need to have an Eclipse workspace that is already setup with the core plug-ins for the i2b2 Workbench. Information on those plug-ins and how to import them into Eclipse can be found in the [i2b2 Workbench Developers Guide](#).

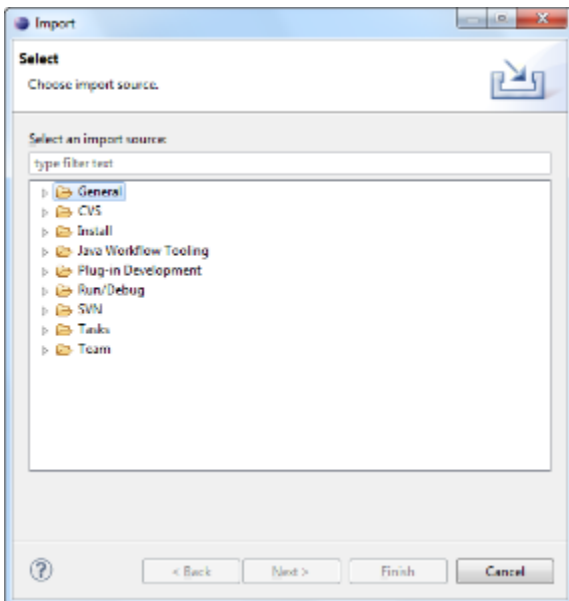
## Import the CRC Test Plug-in

The following steps outline the process of importing the CRC Test Plug-in into your Eclipse project for the i2b2 Workbench.

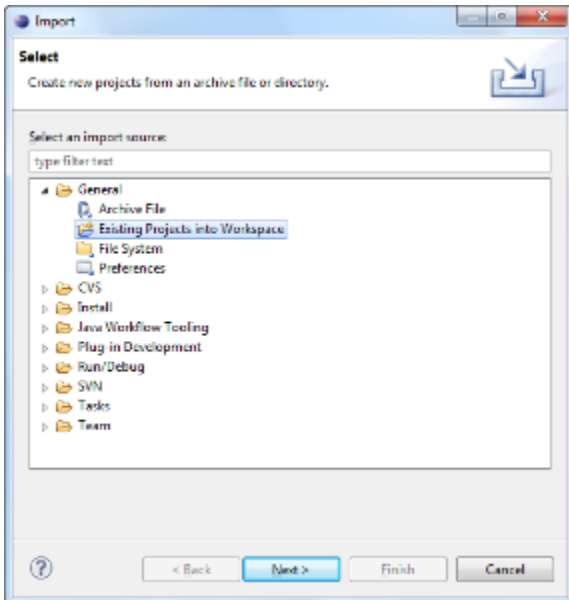
1. Select **File** from the toolbar in Eclipse.
2. A drop-down menu will display.



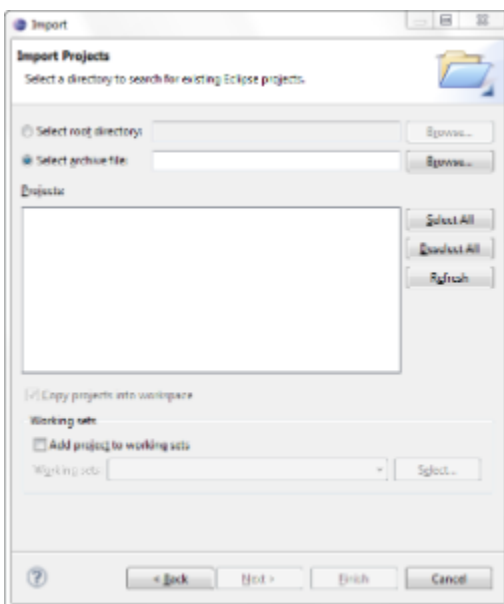
3. Select **Import**.
4. The Import wizard will open to the **Select** page.



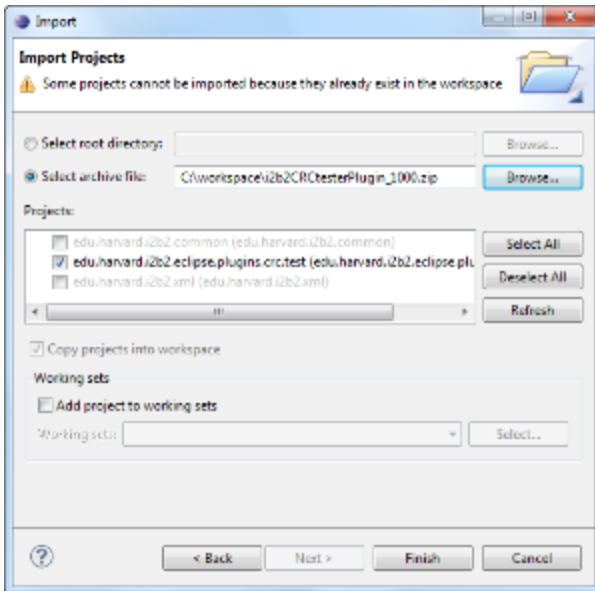
5. Double click on the folder called **General**.
6. Click on **Existing Projects into Workspace**.



7. Click on the **Next** button.
8. The **Import Projects** page of the import wizard will open.
9. Click on the *radial dial* next to **Select archive file**.



10. Enter the path of the CRC Tester archive file or browse for the location where you downloaded the **i2b2crctester-src-xxx.zip** file.
11. Highlight the zip file by clicking on its name.
12. Click on the **Open** button.
13. All the projects in the zip file will now be listed in the **Projects** section of the *Import Projects* page.



14. Verify all the projects are checked off.



If you have already imported your i2b2 Workbench projects then you will most likely have the following two projects already setup in your Eclipse workbench:

- edu.harvard.i2b2.common
- edu.harvard.i2b2.xml

These two files are shared with the i2b2 Workbench and **do not need to be imported again**.

You only need to import the project **edu.harvard.i2b2.eclipse.plugins.crc.test**.

They will appear in the list but you will not be able to select them unless you remove or rename the existing two projects. At this time we recommend keeping the common and xml projects you imported with your i2b2 Workbench.

If for some reason you have not already imported these projects then you can import all three projects.

15. Click on the **Finish** button.

16. Once the projects have finished importing they will appear in your Eclipse workbench.

