

# i2b2 REDCap Integration Session

---

## AMIA Session 1: i2b2 REDCap Integration

Date: March 27, 2017

### Presenters:

**Paul Harris, PhD, Vanderbilt University Medical Center**

*Presentation: [i2b2 and REDCap](#)*

**Stanley Boykin, Computational Health Informatics Program (CHIPS), Childrens Hospital Boston**

*Presentation: [Multimodal Collection of Patient Reported Outcomes mySCILHS](#)*

**Dan Connolly, Kansas University Medical Center**

*Presentation: [SEINE: There and Back Again](#)*

**Philip Ng, Managing Director, i2b2 Foundation**

*Presentation: [Data Data Democratization, Using i2b2, Excel, REDCap in End-User Extracts](#)*

## Session Summary

At the 2017 Joint Summits on Translational Science, the i2b2 Foundation held a session about i2b2 and REDCap. Four members of the i2b2 community presented information on how they have integrated i2b2 and REDCap at their institutions. Below are links to each of their presentations and a video of the session.

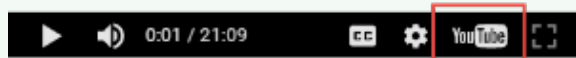
---



### Tip on Viewing Video in Full Screen

Follow these easy steps to view the video in "Full Screen" mode.

- ☐ Start the video
- ☐ A task bar will now appear at the bottom of the video.
- ☐ Click on the **YouTube** icon to bring you to the tranSMART YouTube Channel.



- ☐ The video should start automatically, once it does click on the **Full Screen** icon.



- ☐ Video will now play on your full screen.

---

## Presentations (4)

### i2b2 and REDCap

*Presenter:* Paul Harris, PhD, Vanderbilt University Medical Center

*Discussion Highlights:*

- Overview of REDCap
- Where i2b2 and REDCap Intersect
- Use Cases

### Presentation Video

### Presentation Slides



2017-AMIA\_REDC...B2\_Harris.ppsx

---

## Multimodal Collection of Patient Reported Outcomes mySCILHS

*Presenter:* Stanley Boykin, Computational Health Informatics Program (CHIPS), Childrens Hospital Boston

*Discussion Highlights:*

- SCILHS Network
- SCILHS Research Cycle
- mySCILHS; Utilizing REDCap to engage patients and provide gateway to multimodal patient outcome reporting into i2b2

### Presentation Video

### Presentation Slides



2017-AMIA\_Boy...LHS\_AMIA.ppsx

---

## SEINE: There and Back Again

*Presenter:* Dan Connolly, Kansas University Medical Center

### *Discussion Highlights:*

- SEINE - Synthesizing EDC IDR Network Exchange
- REDCap Forms, Fields, Data into i2b2 Folders, Concepts, and facts
- Use Case: Pilot project - Triple Negative Breast Cancer (TNBC) Registry
- SEINE DataBuilder
- Data Deliver via REDCap
- and so much more...

### Presentation Video

### Presentation Slides



2017-AMIA-IIT01...nnolly\_KUMC.pdf

---

## Data Democratization, Using i2b2 , Excel, REDCap in End-User Extracts

*Presenter:* Philip Ng, University of Rochester Medical Center

*Discussion Highlights:*

- General i2b2 Statistics for 2016
- Integrating i2b2, Excel & REDCap
- Process of using i2b2, Excel & REDCap at URM
- Use cases and "gotchas" learned along the way
- Usage statistics for Excel generations, REDCap syncs, & REDCap Chart Reviews

## Session Summary

**Presentation Video**

**Presentation Slides**



2017-AMIA\_i2b2...\_excel\_ng.ppsx

---