

## 3.3.2 Define Physical Memory

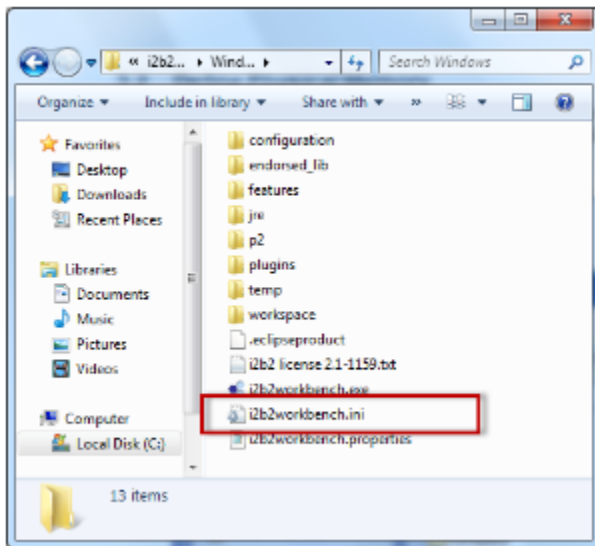
In your i2b2 Workbench directory there is a file called **i2b2workbench.ini** and it is in this file that the physical memory for the i2b2 Workbench is defined.



### Important

This section only applies to Microsoft Windows and it is **optional**. You do not need to edit this information to run the workbench only if you wish to change the default settings.

1. Go to *YOUR\_I2B2\_WB\_DIR* and open the folder called **Windows**.
2. Double click on the **i2b2workbench.ini** file.



2. Edit the value of **Xmx** to be equal to the amount of physical memory on your computer. The default setting is *480m*.

**Example:** Scenario: your computer is running with 1GB of Ram

Default Setting: -Xmx 480m

New Setting: -Xms 1024m