

## 13.3 Stop Services

### Stop WildFly

In order to configure and deploy the Identity Management Cell correctly on your i2b2 server it is important that WildFly is not running.

The process of stopping your *WildFly* Server depends on your environment and the appropriate steps have been outlined in one of the following sections.

- If your *WildFly* is running as a **Linux Service** please proceed to the section on this page titled **Stop WildFly Linux Service**.
- If your *WildFly* is running as a **Windows Service** please proceed to the section on this page titled **Stop WildFly Windows Service**.

### Stop *WildFly* Linux Service

The following steps will walk you through the process of stopping your WildFly server via a Linux service.



#### Note

These steps are written as if your WildFly Server is running as a Linux service. If you have not setup your WildFly to run as a Linux service and would like to do so please see *Run WildFly as a Linux Service* in the *Requirements Chapter*.

1. Open the terminal on your server.
2. Enter the following command to stop WildFly.

#### Stop WildFly Command

```
/etc/init.d/wildfly.sh stop
```

3. The script to stop WildFly will run.
4. Provided there are no issues WildFly will no longer be running.

### Stop *WildFly* Windows Service

The following steps will walk you through the process of stopping your WildFly server via a windows service.



#### Note

These steps are written as if your WildFly Server is running as a Windows service. If you have not setup your WildFly to run as a Windows service and would like to do so please see *Run WildFly as a Windows Service* in the *Requirements Chapter*.

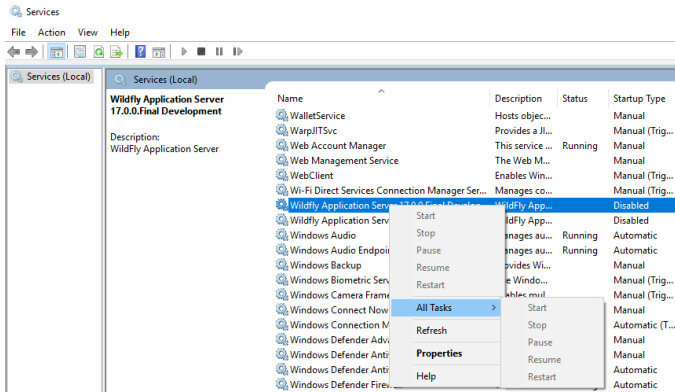
1. Go to your **Administrative Tools** directory
  - a. Click on **Start** and select **Control Panel**.
  - b. In the Control Panel click on **System and Security**.
  - c. Click on **Administrative Tools**
2. Double click on **Services** to display a list of local services installed on your server.
3. Scroll to the service called WildFly *Application Server 7.0.0.Final*.



### Important

The actual name that appears in the list of services depends on what you entered in the `service.bat` file for the **SVCDISP** setting.

4. Using the mouse, *right click* on the name of the service to display the pop-up menu.
5. Select **Stop** to stop the service from running.



6. A window will open displaying the progress.

7. The progress window will close once the service has stopped running.