

IDRT - Integrated Data Repository Toolkit

Summary

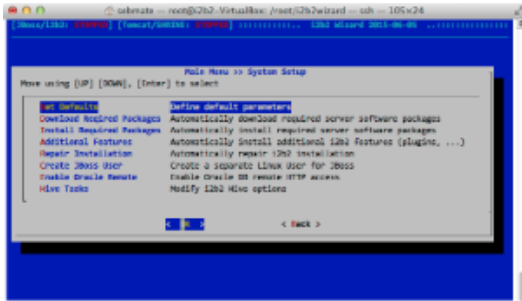
The **IDRT - Integrated Data Repository Toolkit** aims at providing a set of tools to make life with i2b2 easier. Currently, it comprises of four main components:

1. IDRT Architecture and i2b2 Best Practices

While working with i2b2 and the IDRT tool suite, a number of how-to's and recommendations has been developed, covering an overview about the **IDRT platform architecture**, the level of **modifier support in IDRT**, best practices for **performance optimization** and **ontology construction**.

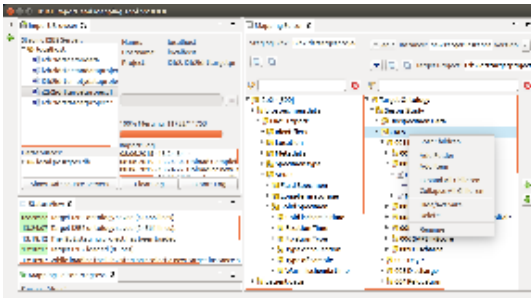
2. i2b2 Wizard

The **i2b2 Wizard** is a component for administrating an i2b2 instance: creating projects, creating users, maintaining server parameters and loading the i2b2 demodata provided by Harvard.



3. IDRT Import and Mapping Tool

The **IDRT Import and Mapping Tool (IMT)** has two missions: first, to load arbitrary source data in common formats like CSV, SQL or CDISC ODM into the i2b2 database and second, to provide a means to curate the i2b2 navigation ontology by creating, renaming and moving concepts or folders (or even mapping concepts to medical terminologies).



4. IDRT i2b2 Web Client Plugin

The **IDRT i2b2 Web Client Plugin** is an extension to the i2b2 webclient that supports the construct of i2b2 modifiers for export.

A screenshot of the IDRT i2b2 Web Client Plugin interface. It shows a table with columns for Patient ID, Smoking Status, Gender, and Age. The table contains 15 rows of data, representing a list of patients with their respective attributes.

Patient ID	Smoking Status	Gender	Age
15	Once per Day	male	38.00000
20	Once per Day	male	52.00000
26	Once per Day	male	29.00000
28	Once per Day	male	55.00000
31	Never	male	49.00000
40	Once per Day	male	49.00000
49	Once per Day	male	61.00000
58	Never	male	42.00000
63	Once per Day	male	33.00000
66	Never	male	49.00000
67	Once per Day	male	69.00000
80	Once per Day	male	42.00000
84	Never	male	70.00000
85	Never	male	59.00000
86	Never	male	28.00000
100	Never	male	39.00000
116	Once per Day	male	66.00000
117	Never	male	22.00000
122	Once per Day	male	47.00000
127	Never	male	69.00000
131	Once per Day	male	34.00000
132	Never	male	34.00000
140	Once per Day	male	69.00000
148	Once per Day	male	41.00000

Disclaimer

The IDRT project is a collaborative effort from the [Department of Medical Informatics, University Medical Center Göttingen](#), the [Chair of Medical Informatics, Friedrich-Alexander-University of Erlangen-Nuremberg](#), and the [Institute for Medical Informatics, Statistics and Epidemiology \(IMISE\), University Leipzig](#), Germany. It was funded by a grant from [TMF – Technology, Methods, and Infrastructure for Networked Medical Research](#), Berlin, Germany.

Sponsored by:



GEFÖRDERT VOM



Bundesministerium
für Bildung
und Forschung

Search this space:

Recently Updated

[260. i2b2 Wizard quick start](#)

Jul 10, 2017 • updated by Mike Mendis • [view change](#)

[i2b2 webclient login.png](#)

Jul 10, 2017 • attached by Mike Mendis

[i2b2 Wizard assign user to project.png](#)

Jul 10, 2017 • attached by Mike Mendis

[i2b2 Wizard create user.png](#)

Jul 10, 2017 • attached by Mike Mendis

[i2b2 Wizard create project.png](#)

Jul 10, 2017 • attached by Mike Mendis

[i2b2 Wizard select networking interface.png](#)

Jul 10, 2017 • attached by Mike Mendis

[i2b2 Wizard default parameters.png](#)

Jul 10, 2017 • attached by Mike Mendis

[i2b2 Wizard main menu.png](#)

Jul 10, 2017 • attached by Mike Mendis

[i2b2 Wizard versions and software selection.png](#)

Jul 10, 2017 • attached by Mike Mendis

[i2b2 Wizard OS version warning.png](#)

Jul 10, 2017 • attached by Mike Mendis

[723. Concepts vs. Modifiers](#)

Jul 09, 2017 • commented by Anonymous

[331. General](#)

May 31, 2017 • commented by Anonymous

[300. IDRT Import and Mapping Tool \(IMT\)](#)

Apr 30, 2017 • commented by Anonymous

[347. Import from Biomaterial Bank](#)

Apr 20, 2017 • commented by Anonymous

[347. Import from Biomaterial Bank](#)

Apr 19, 2017 • commented by Anonymous

[242. Ubuntu Linux Server Edition](#)

Apr 10, 2017 • updated by Sebastian Mate • [view change](#)

[713. ETL Optimization](#)

Mar 12, 2017 • commented by Anonymous

[713. ETL Optimization](#)

Mar 10, 2017 • commented by Anonymous

[713. ETL Optimization](#)

Mar 10, 2017 • commented by Anonymous

[713. ETL Optimization](#)

Mar 09, 2017 • commented by Anonymous

[220. Preparing the installation](#)

Nov 23, 2016 • updated by Sebastian Mate • view change

[500. Download & Contribution](#)

Nov 07, 2016 • commented by Anonymous

[500. Download & Contribution](#)

Nov 06, 2016 • commented by Anonymous

[600. Demonstration Environment \(VM\)](#)

Jun 02, 2016 • commented by Anonymous

[344. Import §21 Files](#)

May 06, 2016 • commented by Anonymous

Table of Contents

100. IDRT Tools Overview

- [110. IDRT Platform Architecture](#)
- [120. Modifier Support in IDRT](#)
- [130. Contributors and Contacts](#)

200. i2b2 Wizard

- [210. Introduction](#)
- [220. Preparing the installation](#)
- [230. Virtual machine setup](#)
- [240. Linux installation](#)
- [250. How i2b2 Wizard works - Important things you need to know](#)
- [260. i2b2 Wizard quick start](#)
- [270. All i2b2 Wizard functions](#)
- [280. Securing the i2b2 server](#)
- [290. SHRINE](#)

300. IDRT Import and Mapping Tool (IMT)

- [305. Overview and Architecture](#)
- [310. Download](#)
- [320. Installation](#)
- [330. Overview](#)
- [340. Import Datasets](#)
- [350. Edit i2b2 Ontology](#)

400. IDRT i2b2 Web Client Plugin

- [410. Installation](#)
- [420. Manual / Features](#)
- [430. Download](#)

500. Download & Contribution

600. Demonstration Environment (VM)

700. i2b2 Best Practice Guides

- [710. Best Practices for Performance Optimization](#)
- [720. Best Practices for Ontology Construction](#)