

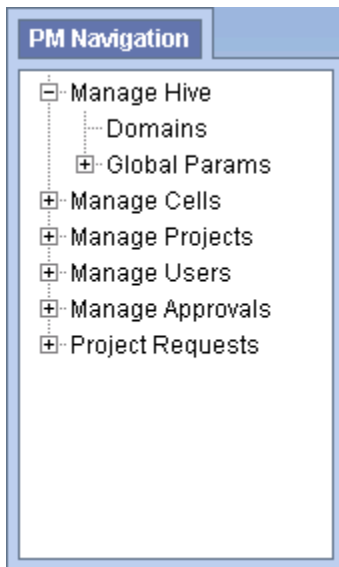
6.3.2.1 Add Hive Parameters

Steps to Add a Hive (Global) Parameter

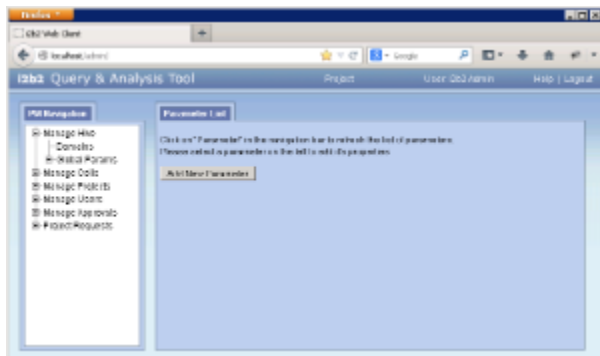
The following steps outline the process of adding a parameter to the hive from within the i2b2 Administration Module.

Assumption: The following steps assume you are already logged into the i2b2 Administration Module. If you do not know how to login please see the chapter titled *i2b2 Administration Module Install*.

1. In the Navigation panel, expand **Manage Hive** to display the available options.



2. Click on the **Global Params** option that appears in the Navigation panel.
3. The **Parameters List** page will display on the right side of the window pane.



4. Click on **Add New Parameter**. The *Enter Parameter* page will display.

Parameter List

Click on "Parameter" in the navigation bar to refresh the list of parameters.
Please select a parameter on the left to edit its properties.

Parameter Name:

Parameter Value:

Parameter Data Type: Text

5. Enter the name of the parameter, the value for the parameter and the data type for the parameter.
6. Click on **Save** to save the new parameter.
7. The *Parameters List* page will display with the new parameter.
8. In the Navigation panel click on **Global Params** to refresh the hierarchical tree and display the new parameter.