

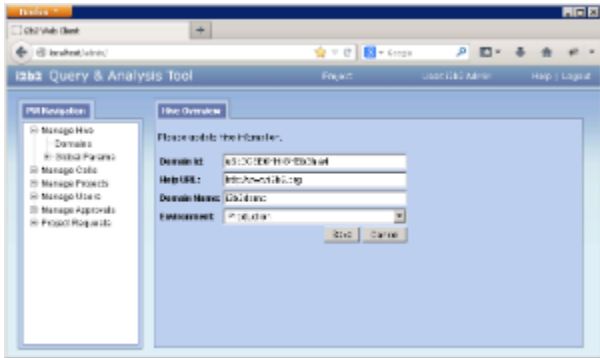
# 6.3.1.1 Edit Hive Data

## Steps to Edit Hive Data

The following steps outline the process of editing the Hive Data in the i2b2 Administration Module.

**Assumption:** The following steps assume you are already logged into the i2b2 Administration Module. If you do not know how to login please see the chapter titled *i2b2 Administration Module Install*.

1. In the Navigation panel, click on **Manage Hive**.
2. The *Hive Overview* page will display on the right.



3. Make the changes to the Hive Data and click on **Save** to save the changes.

### Warning

Be very careful editing the *Domain Id* or *Domain Name*. Changes to either of these two fields will require you to edit the configuration and property files for all your cells, the i2b2 Admin, Web Client and Workbench.