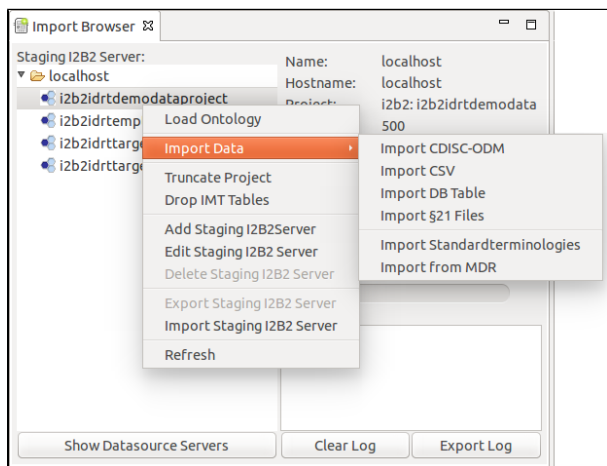


334. Manage i2b2 Projects

Import Datasets

To import a dataset, rightclick an i2b2 project and select **Import Data** and chose the file format.

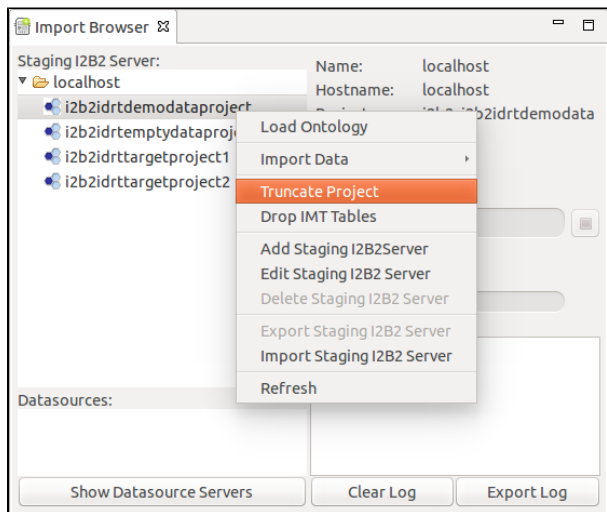


You can import the following data types (Click the data format for detailed instructions):

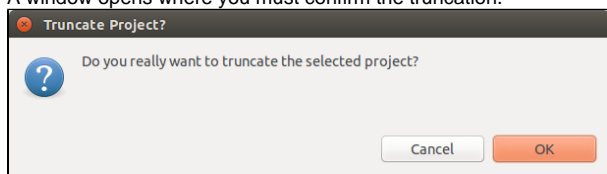
1. [CDISC-ODM](#)
2. [CSV](#)
3. [DB Table](#)
4. [\\$21 Files](#)
5. [Standardterminologies](#)
6. [MDR Dataset](#)


Truncate Projects

If you want to truncate your i2b2 project, rightclick the i2b2 project, and select Truncate Project from the context menu.



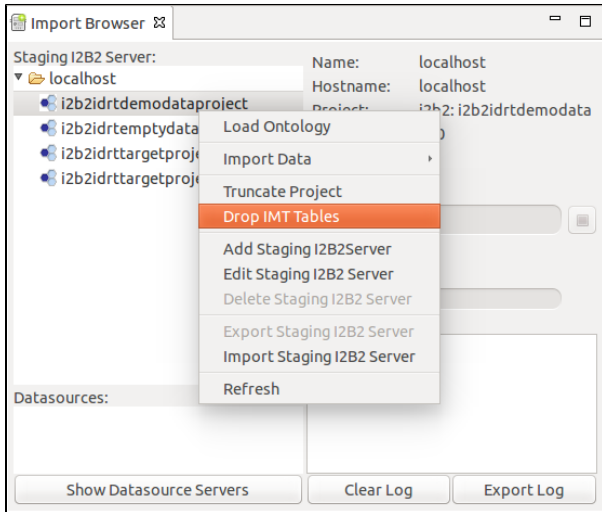
A window opens where you must confirm the truncation.



 Please note that this option will irrevocably delete all data in the selected project!

Drop IMT Tables

If you want to drop the IMT specific tables that are generated, rightclick the i2b2 project, and select Dropt IMT Tables from the context menu.



A window opens where you must confirm the drop.

