

# SMART i2b2

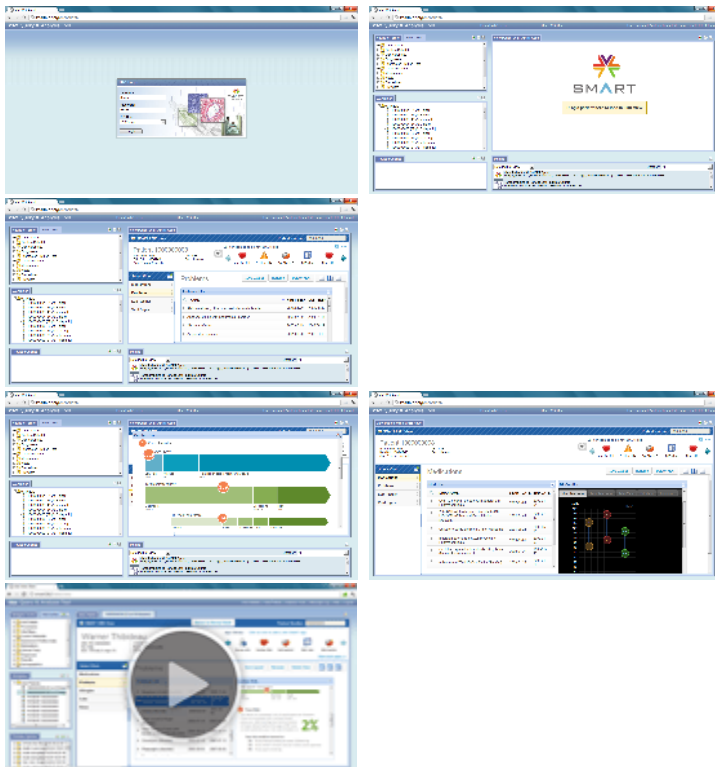
## Substitutable Medical Apps in i2b2

As part of the ONC's [Strategic Health IT Advanced Research Projects \(SHARP\)](#) program and the [Substitutable Medical Apps Reusable Technologies \(SMART\)](#) project, we have [SMART-enabled the i2b2 platform](#) so that substitutable SMART applications (apps) can interact with health data within i2b2. We have created a new i2b2 cell ([the SMART cell](#)) that exposes the SMART API for various types of data including medications, problems, demographics, lab results, vital signs, notes, etc. These functions return a [common RDF/XML output](#) in which SMART apps understand.

### Quick Downloads

File Name	File Size	Description	Release Date	Version
<a href="#">i2b2vmware-1603_smart-10.zip</a>	1.8 GB	This is a modified i2b2 1.6.03 VMWare <b>virtual machine</b> containing the components that SMART-enable i2b2.	March 30, 2012	1.0
<a href="#">smart-i2b2core-src-106.zip</a>	75 MB	Complete Source Package: SMART-i2b2 Core <b>Source Code</b> + Web Client Files + Data Scripts Compatible with i2b2 1.6.x (Tested on i2b2 1.6.08)	<b>April 1, 2013</b>	1.06
Bundled with source package	3 MB	SMART-i2b2 <b>Data Scripts</b> for Oracle and SQL Server	June 10, 2012	1.0
<a href="#">smart-i2b2_v1.0_screencast.mp4</a>	7.3 MB	Screencast <b>video</b> of SMART i2b2 Patient Centric View web client plugin	March 30, 2012	1.0

### Screenshots and Screencast



[Navigation](#)

[Contact Information](#)

**Nich Wattanasin**

Project Manager

Partners Healthcare

E-mail: [nwattanasin@partners.org](mailto:nwattanasin@partners.org)

**Shawn Murphy, MD, PhD**

Medical Director, Research Computing

Partners Healthcare

E-mail: [snmurphy@partners.org](mailto:snmurphy@partners.org)