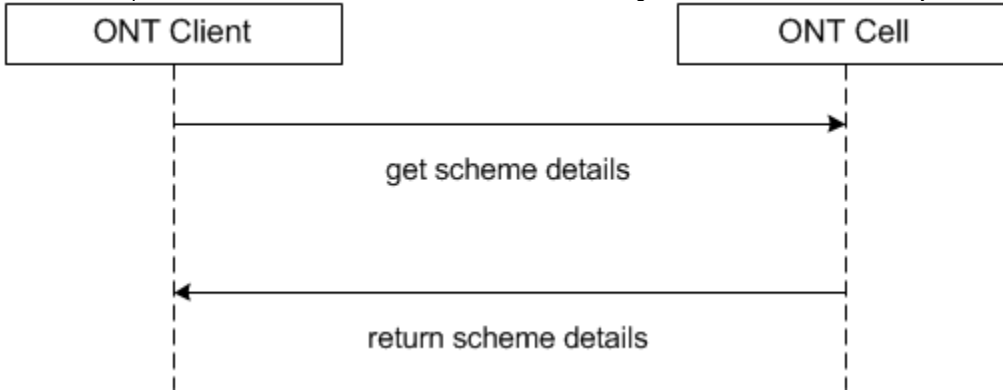


# get\_schemes

The **get\_schemes** message provides information about existing coding systems, called schemes. It returns a list of all the source systems. This use case provides information about schemes to the client, who might want a list of all the source systems that contribute vocabulary.



A **get\_schemes** message returns a list of schemes that will be displayed in the Ontology Find Terms tool. User information is provided in the *message\_header*.

## Generate Scheme Categories for a given User / Project

To populate the list of schemes available to a user the sequence of events is as follows:

1. A client requests a list of schemes for a given user or project (type=default).
2. The ONT server performs the following steps:
  - a. Get the project / role available for the user from the PM Cell; this also serves to validate the user.
  - b. Query the table of schemes and pass back a list of schemes associated with the project / role.
  
1. The client populates the scheme categories in the Find Terms tool.

## get\_schemes Request Message

```
<message_body>
<get_schemes type="default"/>
</message_body>
```

### Possible "type" Settings

Value	Description
default	Return key / name pairs

## get\_schemes Response Message

The get\_schemes request has the following settings:  
type=default

**Response Message:**

```
<message_body>  
<concepts>  
<concept>  
<key>ICD9:</key>  
<name>ICD9</name>  
</concept>  
</concepts>  
</message_body>
```