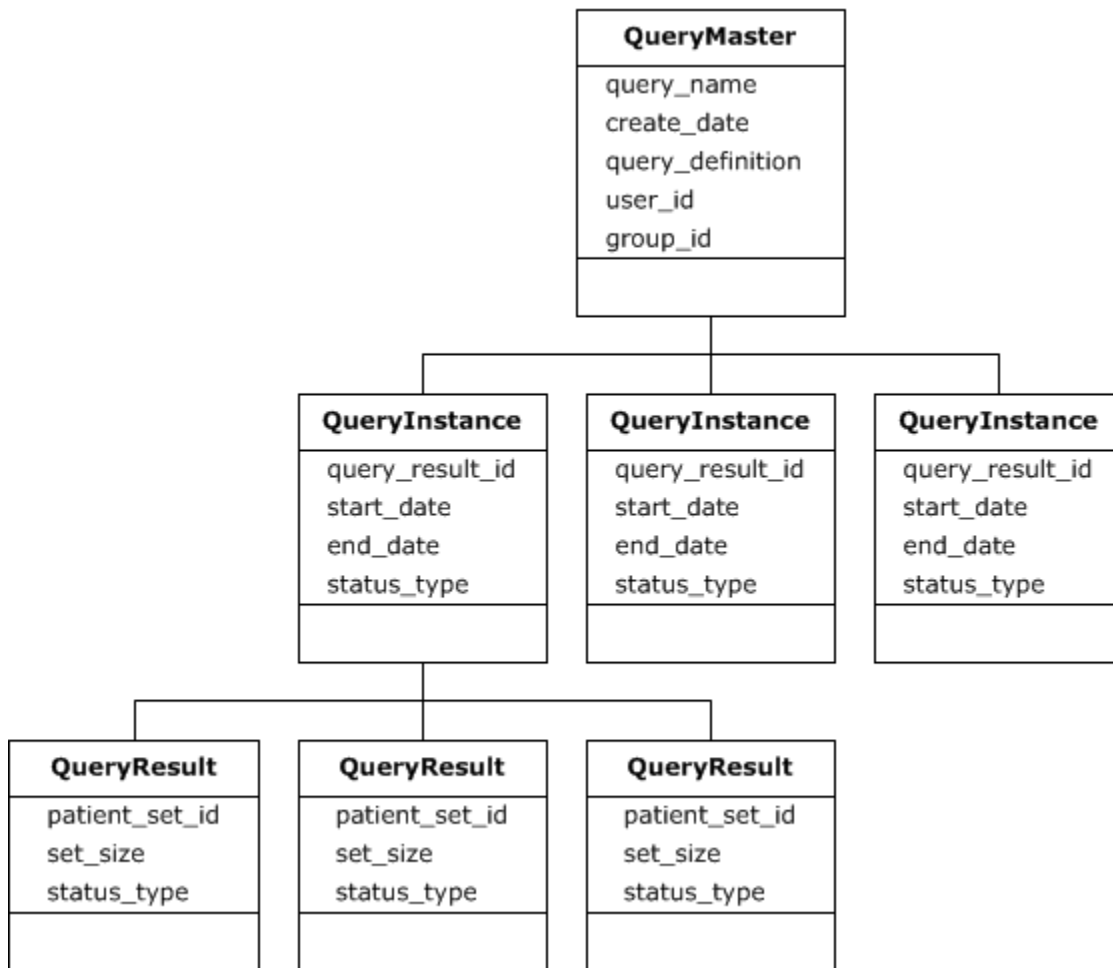


Conceptual Model



The **QueryMaster** holds the master information about the query like the *query name*, *query definition*, *user_id*, and *group_id*. The **query_definition** element in the **QueryMaster** holds the xml representation of the query constraint; its details are described below. The run information of the query is recorded in the **QueryInstance** and is created whenever the query is executed. **QueryResult** typically holds the result information of the query, such as the *id* and the *set size* of the patient set, as well as the result status. There can be multiple **QueryInstances** for one **QueryMaster** and one **QueryInstance** can have multiple **QueryResults**.