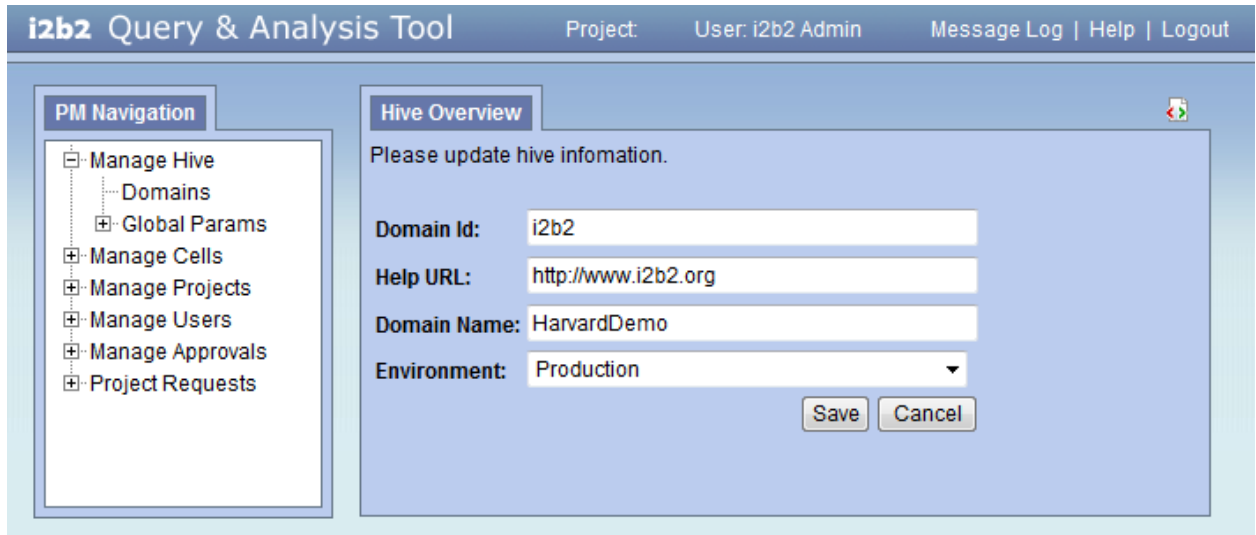


Hive Setup

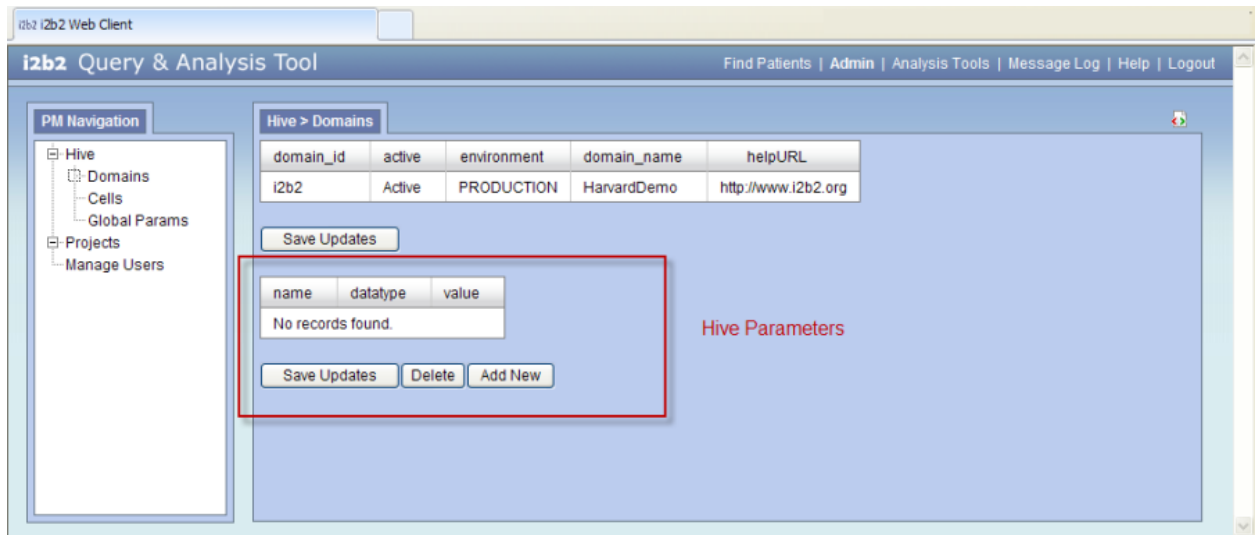
Hive Data

- The domain page captures general information about the hive.
- The information captured includes the *domain id*, *domain name*, *environment*, and *help URL*.
- The information will be stored in the **PM_HIVE_DATA** table.



Hive Parameters

- Parameters entered here are *specific to the hive (domain)* and are not specific to any one project or user.
- The hive parameters can be added from the **hive (domain) data page**. Once you click on the domain an additional section for entering the parameters will appear at the bottom of the page.
- The information will be stored in the **PM_HIVE_PARAMS** table.



Cell Data

- The **cell data page** captures information and registers the cells associated to the hive.
- The information will be stored in the **PM_CELL_DATA** table.

i2b2 Query & Analysis Tool Project: User: i2b2 Admin Message Log | Help | Logout

PM Navigation

- ⊕ Manage Hive
- ⊖ Manage Cells
 - ⊕ Data Repository
 - ⊕ File Repository
 - ⊕ Ontology Cell
 - ⊕ Workplace Cell
- ⊕ Manage Projects
- ⊕ Manage Users
- ⊕ Manage Approvals
- ⊕ Project Requests

Cells

Click on "Cell" in the navigation bar to refresh the list of cell.
Please select a cell on the left to edit its properties

id	name	method	url	project_path
CRC	Data Repository	REST	http://yourHost:9090/i2b2/rest/QueryToolService	/
FRC	File Repository	SOAP	http://yourHost:9090/i2b2/services/FRService	/
ONT	Ontology Cell	REST	http://yourHost:9090/i2b2/rest/OntologyService	/
WORK	Workplace Cell	REST	http://yourHost:9090/i2b2/rest/WorkplaceService	/

Cell Parameters

- Parameters entered here are *specific to the cell* and are not specific to any one project or user.
- The cell parameters can be added from the **cell data page**. Once you click on a cell an additional section for entering the parameters will appear at the bottom of the page.
- The information will be stored in the **PM_CELL_PARAMS** table.

i2b2 Query & Analysis Tool Project: User: i2b2 Admin Message Log | Help | Logout

PM Navigation

- ⊕ Manage Hive
- ⊖ Manage Cells
 - ⊕ Data Repository
 - ⊕ File Repository
 - ⊖ Ontology Cell
 - ⊖ Params
 - ONTMAX
 - ⊕ Workplace Cell
 - ⊕ Mapper Cell
- ⊕ Manage Projects
- ⊕ Manage Users
- ⊕ Manage Approvals
- ⊕ Project Requests

"Ontology Cell" > Parameter > "undefined"

Please select which parameter screen you want to access.

Parameter Name:

Parameter Value:

Parameter Data Type: