

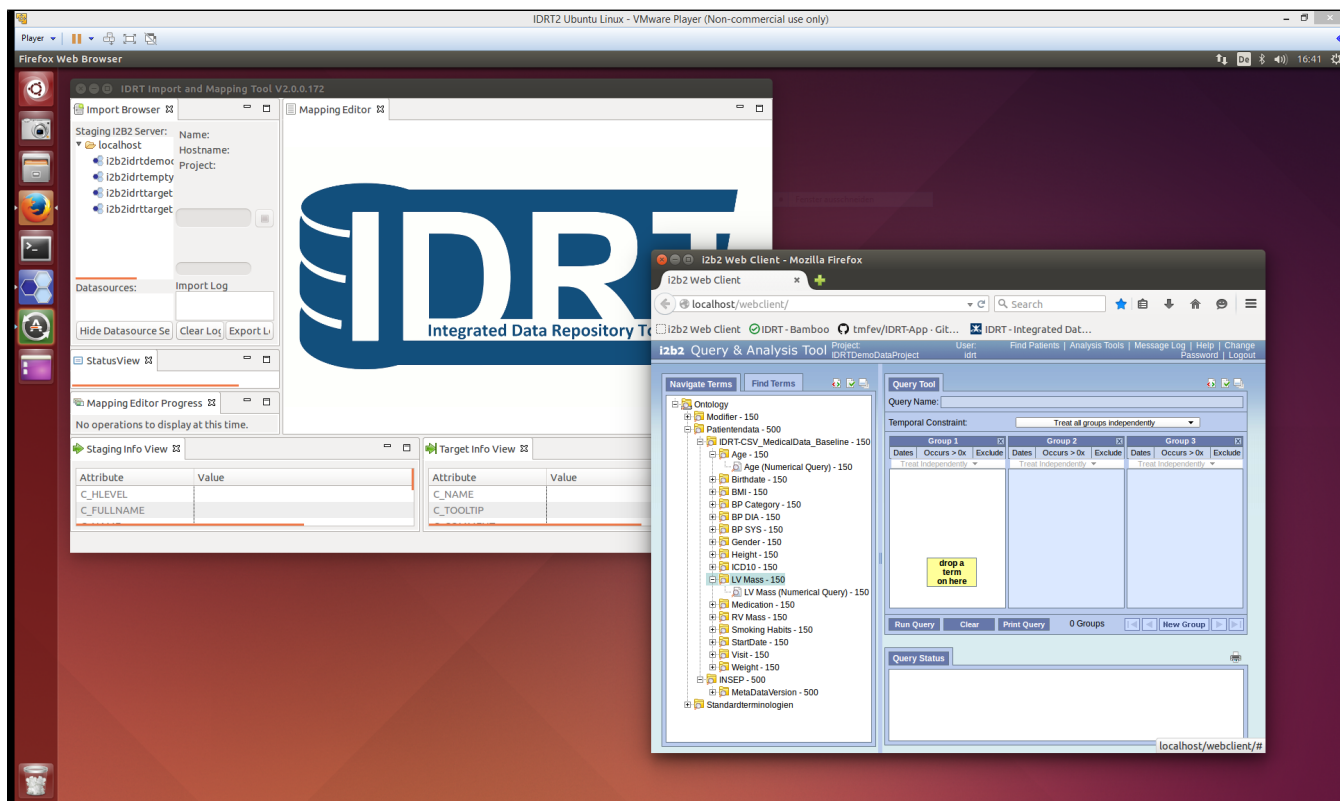
600. Demonstration Environment (VM)

Virtual Machine

For quick evaluation, we provide a virtual machine (VM) containing the latest i2b2 build and all IDRT tools preconfigured with examples files.

The VM needs VMware Player 7.1 (free for personal use) or VMware Workstation 11 or higher to run. It is preconfigured for using 4 GB RAM, 2 CPU cores and 50 GB hard drive space. If errors occur during start, you may want to adjust the resource settings.

The VM is based on Ubuntu 14.04 LTS 64-bit operating system. After booting or rebooting the VM, i2b2 is already started as well as the IMT.





PostgreSQL Remote Access

If you want to access the postgresQL database from outside the virtual machine, you have to edit the following files manually:

/etc/postgresql/9.3/main/pg_hba.conf and add the following line

```
host all all 0.0.0.0/0 trust
```

/etc/postgresql/9.3/main/postgres.conf and change

```
listen_addresses='*'
```

Restart postgresQL by

```
sudo service postgresql restart
```



Keyboard Layout

The keyboard layout is set to german, to change the layout:

```
sudo dpkg-reconfigure keyboard-configuration
```

Download:

[IDRT VM 2.0.zip](#) (6.4 GB)



Due to frequent updates, we recommend [updating the IDRT Import and Mapping Tool](#) inside the virtual machine after downloading.

Passwords:

Ubuntu 14.04 LTS

username: idrt

password: idrt

Postgres 9.3.9

database: i2b2

username: postgres

password: i2b2

i2b2 webclient

username: idrt

password: idrt

Available i2b2 Projects:

| Project Database name | content |
|-----------------------|--|
| IDRTDemoDataProject | All available demo data already loaded |

| | |
|----------------------|---|
| IDRTEmptyDataProject | Empty project for testing the IDRT Import Tool with your own data |
| IDRTTargetProject1 | Derived project from IDRTDemoDataProject |
| IDRTTargetProject2 | Derived project from IDRTDemoDataProject |

Table of Contents