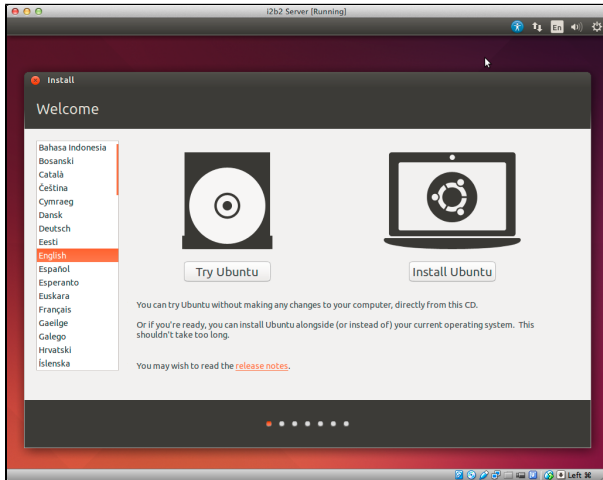


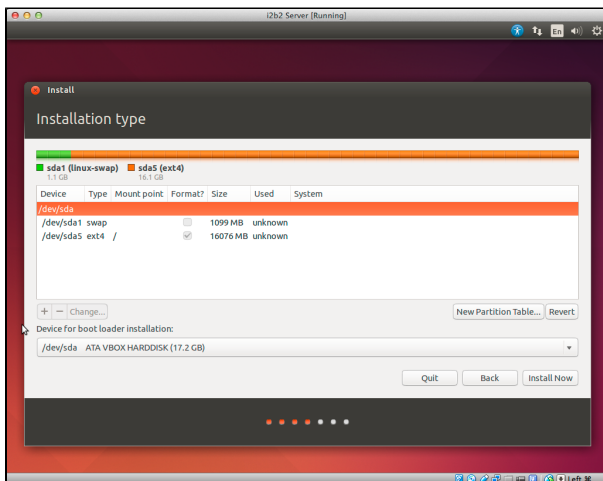
241. Ubuntu Linux Desktop Edition

1. Start your new (virtual) machine and wait until the graphical installation manager comes up. Select **"English"** on the left side (other languages will probably fail, because this choice affects how the Oracle database is initialized (date format, etc.) and how various Linux tools print messages). Then select **"Install Ubuntu"**.



2. On the next screen, check **"Download updates while installing"**. Press **"Continue"**.

3. The next screen is about partitioning the (virtual) hard disk. We need more swap space than normal. Therefore, we have to go the manual route - select **"Something else"** and press **"Continue"**. Select **"New Partition Table..."** and **"Continue"**. Select the **"free space"** entry in the table above and click on the **"Plus"** button. In the new window enter in **"Size:"** the value **"1101"** and select **"Use as: swap area"**. Click **"OK"**. A new swap partition with 1101 MB should appear. Again, select the **"free space"** entry in the table and click on the **"Plus"** button. In the new window enter in **"Mount point:"** the value **"/"**. Click **"OK"**. A new ext4 partition with ~15 GB should show up. If the whole partitioning looks like in the figure below.



Next, press **"Install Now"**, **"Continue"**.

4. On the next screen, select your time zone. Press **"Continue"**. Choose your keyboard layout. It is OK to choose one different to English. Press **"Continue"**.

5. In the **"Who are you?"** screen fill in your desired information. Press **"Continue"**. This will install Ubuntu Linux on your (virtual) machine. After the installation press **"Restart Now"**. After the shut-down, hit enter to "eject" the disc.