

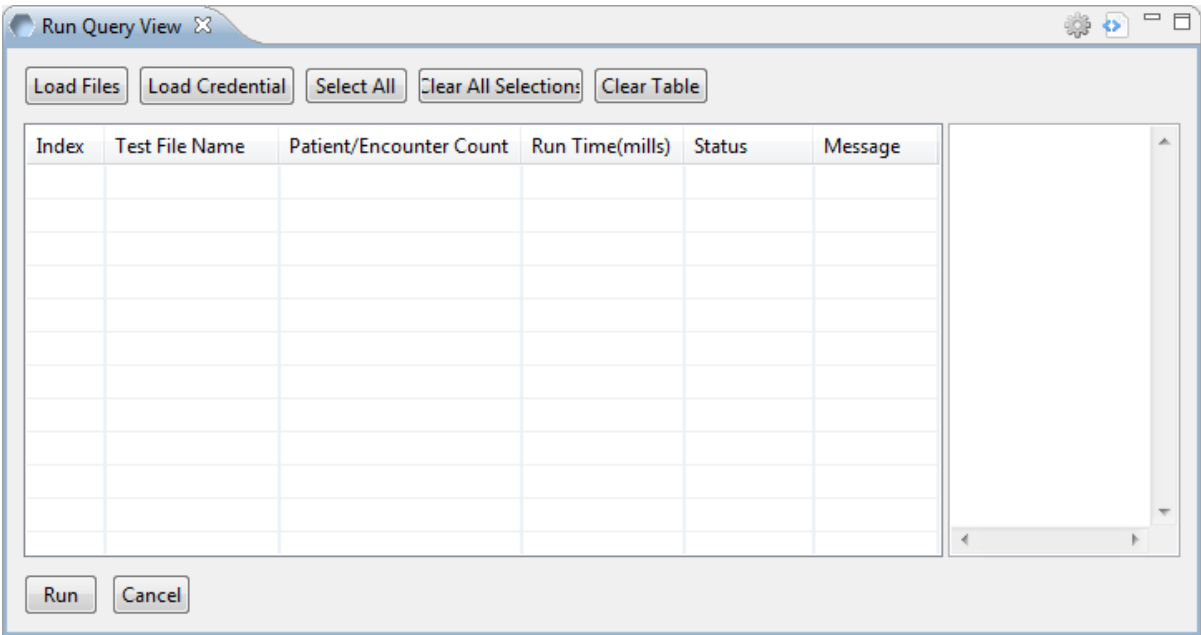
CRC Tester Plug-in

Overview

The CRC Tester is an optional plug-in for the i2b2 Workbench and is designed to test the CRC web services. A set of sample test cases have been provided that will work with the i2b2 demo data.

Some of the key features are:

- Sample test cases that work with the i2b2 Demo data have been provided with the source code.
- Users can easily create their own test cases that will work with their data.
- An i2b2 Workbench view has been created to provide users the ability to easily see the test cases running, their status and any errors.



CRC Tester Plug-in

Contents

Quick Downloads

File Name	File Size	Description	Release Date	Version
i2b2crctesterplugin-src-1000.zip	31 MB	Source ?Package: CRC Test Plug-in Source Code + Test Cases	December 7, 2012	1.0.00
i2b2crctesterplugin-jar-mac-1000.zip	627 KB	Macintosh: CRC Test Plug-in JAR file + Test Cases	December 7, 2012	1.0.00
i2b2crctesterplugin-jar-win-1000.zip	627 KB	Windows: CRC Test Plug-in JAR file + Test Cases	December 7, 2012	1.0.00

Contact Information

Mike Mendis

Project Manager

Partners HealthCare

E-mail: mmendis@partners.org

Shawn Murphy, MD, PhD

Medical Director, Research Computing

Partners Healthcare

E-mail: snmurphy@partners.org

Search space