

9.3 Stop Services

Stop WildFly

In order to configure and deploy the Workplace cell correctly on your i2b2 server it is important that WildFly is not running.

The process of stopping your *WildFly* Server depends on your environment and the appropriate steps have been outlined in one of the following sections.

- If your *WildFly* is running as a **Linux Service** please proceed to the section on this page titled **Stop WildFly Linux Service**.
- If your *WildFly* is running as a **Windows Service** please proceed to the section on this page titled **Stop WildFly Windows Service**.

Stop *WildFly* Linux Service

The following steps will walk you through the process of stopping your WildFly server via a Linux service.



Note

These steps are written as if your WildFly Server is running as a Linux service. If you have not setup your WildFly to run as a Linux service and would like to do so please see *Run WildFly as a Linux Service* in the *Requirements Chapter*.

1. Open the terminal on your server.
2. Enter the following command to stop WildFly.

Stop WildFly Command

```
/etc/init.d/wildfly.sh stop
```

3. The script to stop WildFly will run.
4. Provided there are no issues WildFly will no longer be running.

Stop *WildFly* Windows Service

The following steps will walk you through the process of stopping your WildFly server via a windows service.



Note

These steps are written as if your WildFly Server is running as a Windows service. If you have not setup your WildFly to run as a Windows service and would like to do so please see *Run WildFly as a Windows Service* in the *Requirements Chapter*.

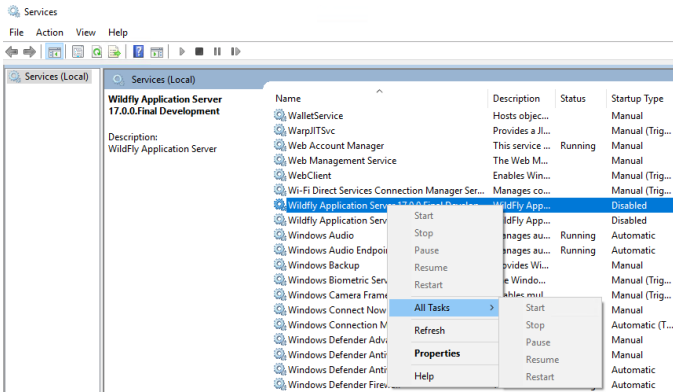
1. Go to your **Administrative Tools** directory
 - a. Click on **Start** and select **Control Panel**.
 - b. In the Control Panel click on **System and Security**.
 - c. Click on **Administrative Tools**
2. Double click on **Services** to display a list of local services installed on your server.
3. Scroll to the service called WildFly *Application Server 7.0.0.Final*.



Important

The actual name that appears in the list of services depends on what you entered in the `service.bat` file for the **SVCDISP** setting.

4. Using the mouse, *right click* on the name of the service to display the pop-up menu.
5. Select **Stop** to stop the service from running.



6. A window will open displaying the progress.

7. The progress window will close once the service has stopped running.